



SEE THE WORLD IN A NEW WAY

# INDUSTRIAL PRODUCT CATALOG

# CONTENTS

---

# 1

## INTRODUCTION

ABOUT HIKMICRO	.....	04
COMPANY STRENGTHS	.....	05
APPLICATIONS	.....	08

---

# 2

## HANDHELD THERMAL CAMERA

MINI SERIES	.....	14
E SERIES	.....	16
ECO SERIES	.....	18
B SERIES	.....	22
POCKET SERIES	.....	24
M SERIES	.....	26
GX1 SERIES	.....	28
SP SERIES	.....	30

---

# 3

## FIREFIGHTING THERMAL CAMERA

FB21 <sup>NEW</sup>	.....	36
FT31 <sup>NEW</sup>	.....	38

---

# 4

## INTRINSICALLY SAFE

BX20 <sup>NEW</sup>	.....	42
---------------------	-------	----

---

# 5

## ACOUSTIC SERIES

AI56	.....	46
AD21 <sup>NEW</sup>	.....	48

---

# 6

## SOFTWARE SUPPORT

HIKMICRO VIEWER	.....	52
HIKMICRO ANALYZER	.....	53
HIKMICRO INSPECTOR	.....	54

# ABOUT HIKMICRO

HIKMICRO is a leading provider of thermal imaging equipment and solutions. Specializing in thermal technology innovation, the company offers thermal cores, modules, cameras, total solutions, and also night vision products, which can be used in outdoor, industrial, and security industries globally, serving customers in over 100 countries and regions.



# COMPANY STRENGTHS

## | Industry Leading Warranty

HIKMICRO provides a 3-10-2\* warranty period (from the date of purchase) that exceeds the industry standard level of handheld thermography products. For more information, please visit our website.

- ◆ 3 years components and labor coverage for the full product.
- ◆ 10 years of coverage for the detector - the most important part of the whole product!
- ◆ 2 years of coverage for the rechargeable battery.



\*We offered an extra 2-year extended warranty for firefighting thermal cameras, with a 5-10-2 warranty period.

## | Local Repair Service

- ◆ HIKMICRO provides customers with comprehensive maintenance services and responds to failures in the shortest possible time, minimizing camera downtime.

## | Local Support and Training Service

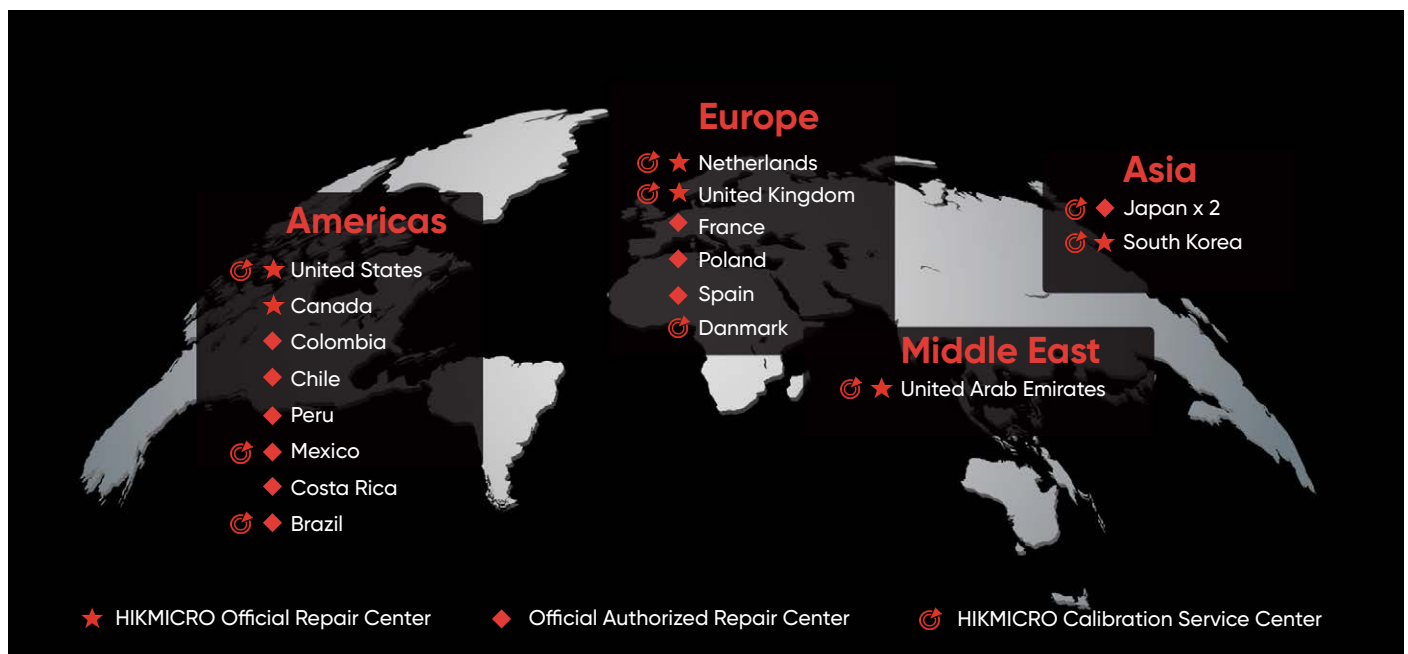
- ◆ International subsidiaries and local offices provides localized marketing and technical support. Professional technicians train the staff of authorized stores regularly.
- ◆ HIKMICRO provides technical consultation via the official website, email, and 24-hour hotline.

## | Global Calibration Services

- ◆ HIKMICRO is pleased to offer calibration services through one of our global sites or factory-authorized service centers. Contact your local office for details.

## 18 REPAIR / CALIBRATION 4 DISTRICTS

Our service doesn't end at the sale



# PRODUCT STRENGTHS

## | Image Frequency

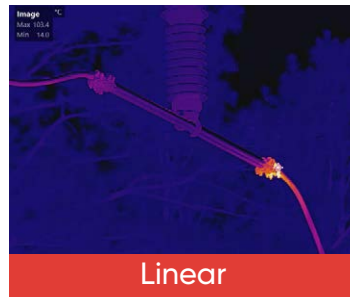
With a minimum of 25 Hz and some systems up to 50 Hz, you'll experience ultra-smooth video and measurements while panning across scenes or viewing moving targets.

## | Accuracy

Up to  $\pm 1^{\circ}\text{C}$  accuracy and repeatable temperature measurements based on our high stability detector, optics design, and quality control.

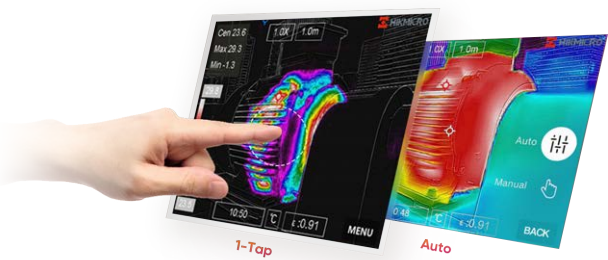
## | HIKMICRO advanced algorithms

Linear and histogram color distribution is one of the HIKMICRO image enhancement algorithms, which can measure high or low-temperature targets in different scenarios and create sharp thermal images for more accurate and reliable measurements.



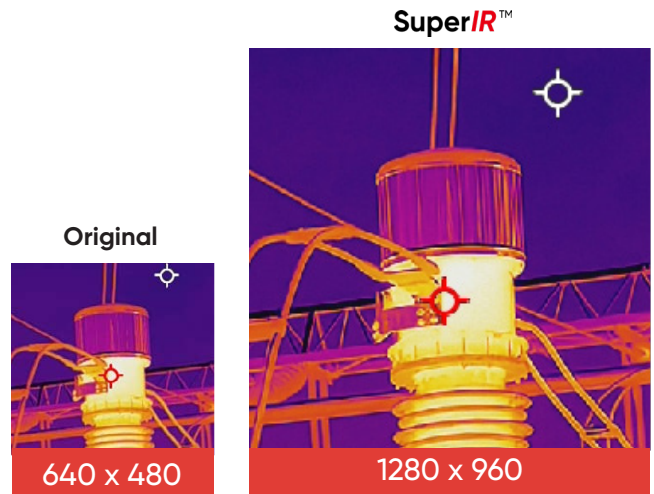
## | 1-Tap Level & Span

Allows you to focus on one area of the image by narrowing the span with 1-Tap of the screen and reducing background noise.



## | SuperIR™

HIKMICRO SuperIR achieves up to 4 times more pixels through our proprietary neural network technology, which boosts image quality, enhances image details, sharpens edges, and reduces image noise.

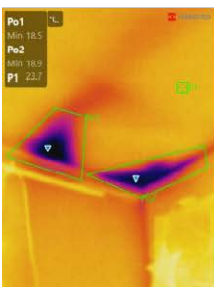


# BUILDING INSPECTION APPLICATION



In building inspections, missing or damaged insulation, building envelope air leaks, and moisture intrusion can be very difficult to find before they become serious enough to damage or destroy building contents. Thermal cameras can and have been utilized in the discovery of otherwise undetectable heat, air, and moisture anomalies in all types of structures.

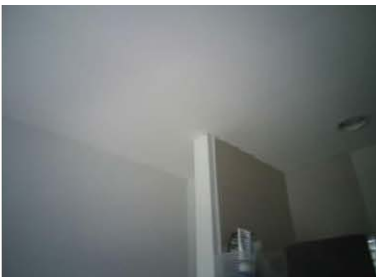
## WHAT WE SEE



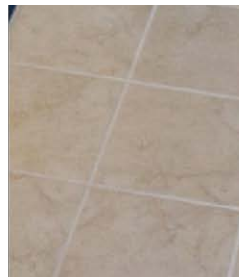
Water Leaks



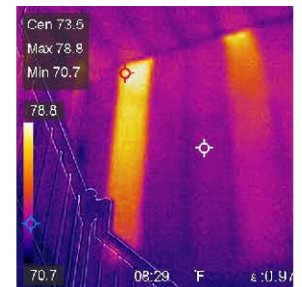
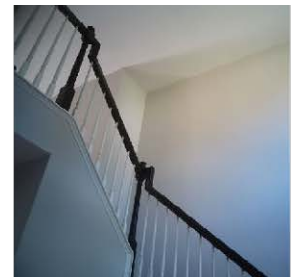
Heat Loss



Air Leaks



Radiant Floor Heating



Insulation Voids



# ELECTRIC UTILITIES APPLICATION



Managing equipment and assets associated with the transmission and distribution of electrical energy is critical to long term system efficiency and safety. Thermal imaging enables added safety inspections, proactively inspect, monitor, and plan for routine maintenance before small issues become catastrophic.

## WHAT WE SEE



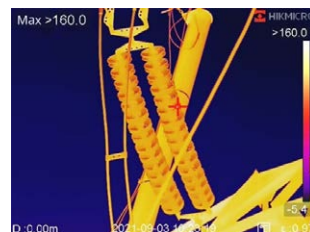
Hot Bushing



Hot Breaker



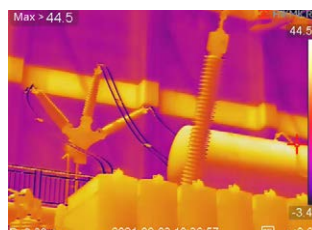
Solar Panel Inspection



Insulator



Connector Issues



Isolating Switch

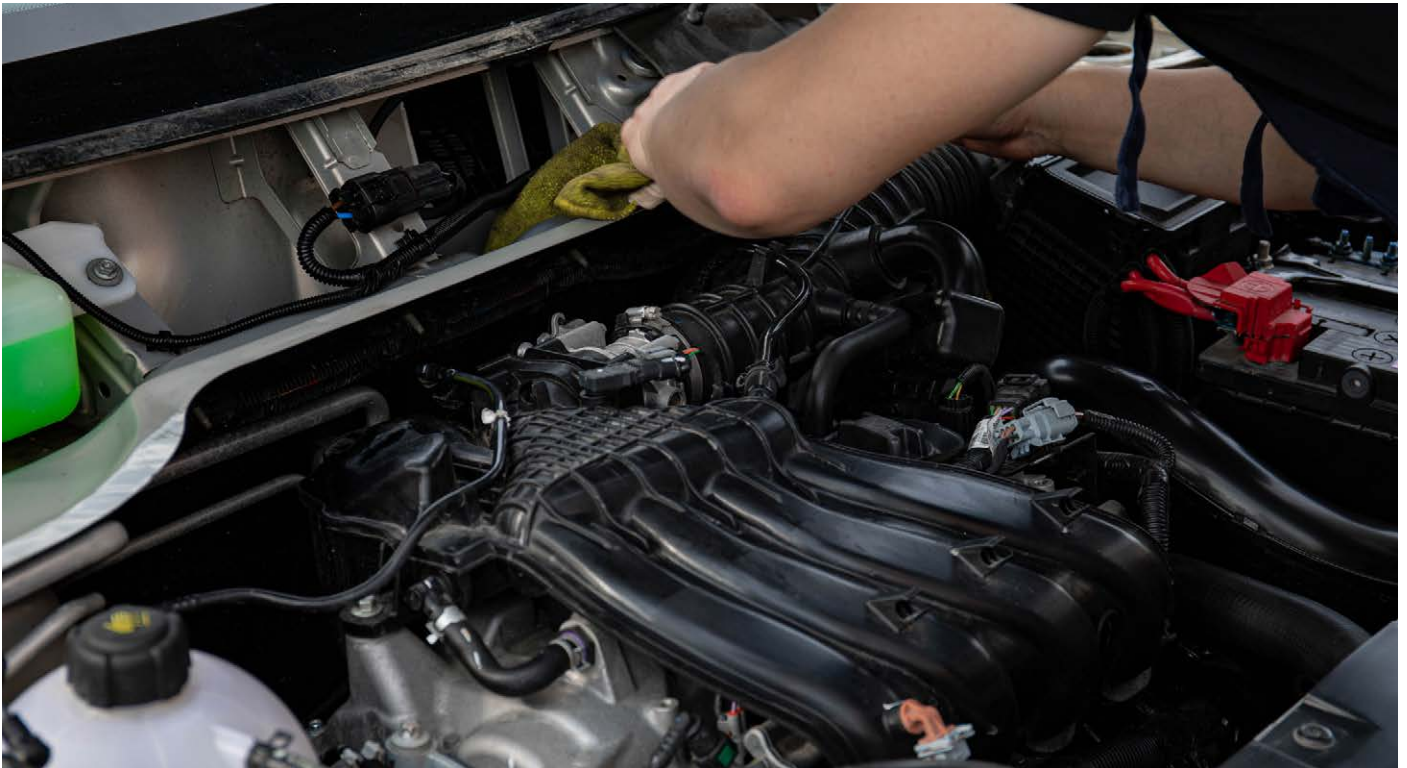


Transformer Temp



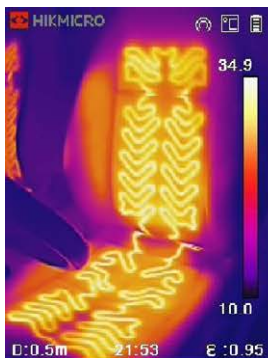
Surge Arrester

# AUTOMOTIVE APPLICATION

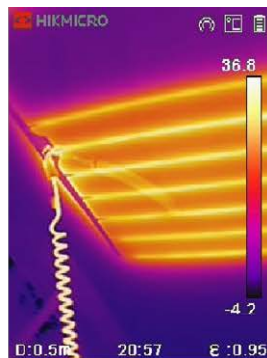


Thermal imaging brings hidden details to the forefront and isolates the issues prior to any disassembly saving countless hours in the process. Quickly check items including passenger comfort systems, defog/defice operations, parasitic voltage draw, bearings/gears, cooling/radiators, exhaust systems, tire wear, and differences in combustion processes between cylinders.

## WHAT WE SEE



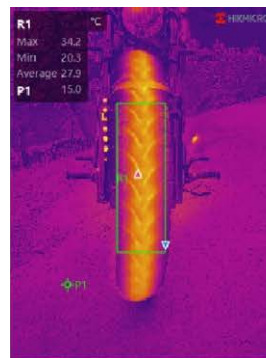
Seats Heater  
Seat Heater Operation



Window Heater



Wheel Heater  
Steering Wheel Heat

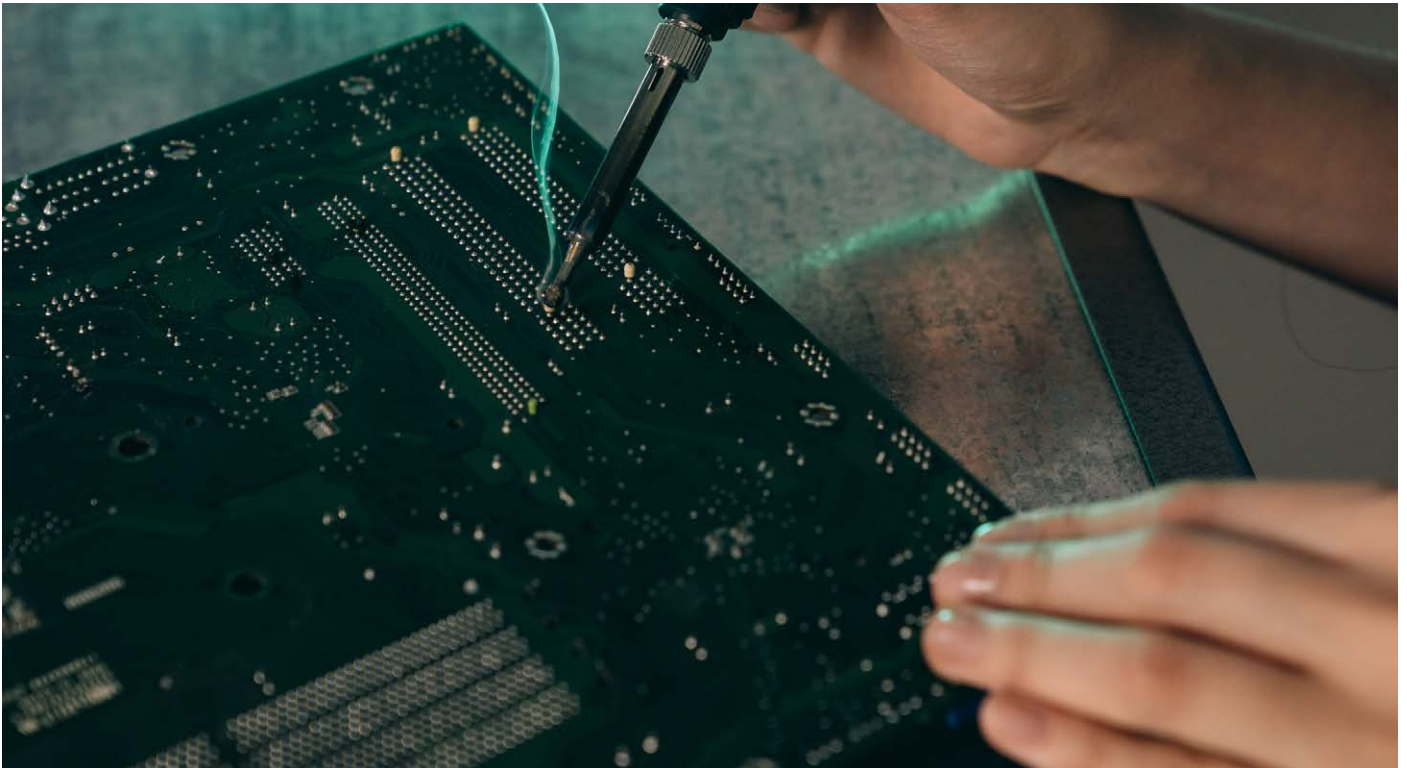


Front Tire  
Tire Heat And Wear  
Pattern



Engine  
Engine Systems

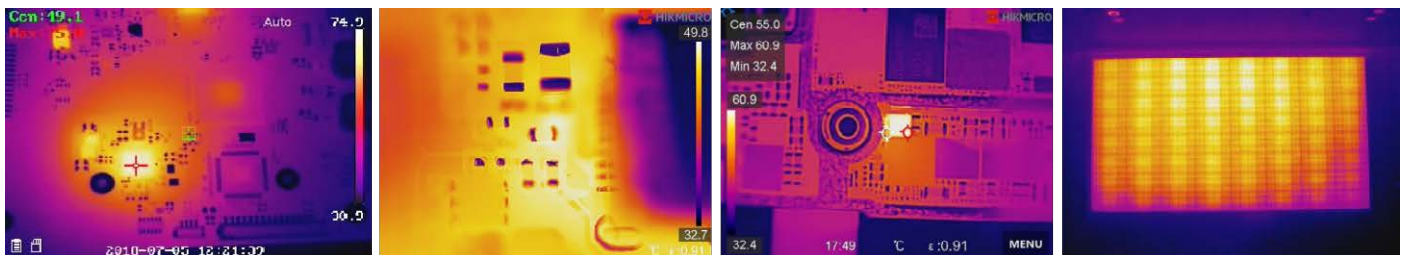
# ELECTRICAL COMPONENTS APPLICATION



Various types of tests and inspections are performed through traditional methods to detect defects, problems, and failures in PCBs that require improvement. But traditional methods have usually proven to be low efficiency, health hazards, complicated, and low definition.

A thermal imager with a macro lens has proven to be an efficient and reliable tool for solving a wide range of component-level defects. A macro lens specifically allows you to focus extremely close to magnify and display the items at the micron level of detail. Get an incredibly detailed image of very small objects so you can gain insight into thermal buildup and dissipation on printed circuit boards, identify a faulty or undersized component, or potentially even pinpoint precise faulty locations on electrical equipment.

## WHAT WE SEE



PCB

PCB

PCB

PCB

# HANDHELD THERMAL CAMERAS

Handheld thermal cameras are an ideal solution that provides accurate non-contact temperature measurement and heat distribution image display for electrical predictive maintenance, building inspection, HVAC inspection, manufacturing monitor, etc. HIKMICRO's industrial handheld thermal cameras have been used widely in detecting temperature anomalies before a fire starts, detecting radiator efficiency for HVAC inspection, searching for heat loss in buildings, and finding hot spots and invisible defects on mechanical or electrical systems that could indicate a potential problem. They are also used for surveying areas that are hard to reach with conventional measurement tools.



# MINI2 SERIES

Make your phone smarter with HIKMICRO Thermal



Mini Series for **Android** Smartphone and Tablet

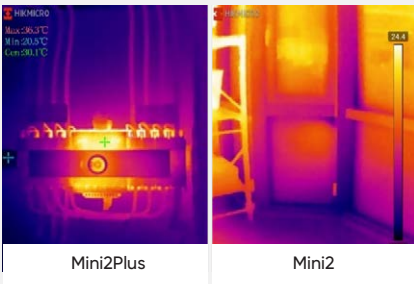


VISIT OUR WEBSITE

● Mini2 / Mini2Plus

## Multiple Product Options

The Mini2 series offers wide-angle and manual focus options. The Mini2Plus with manual focus lens provides a clear view of small objects such as electronic components or distant larger objects like electrical or mechanical equipment from a safe distance. The Mini2 with its 50° wide-angle lens is ideal for quickly scanning walls, facades, and large objects.



Mini2Plus

Mini2

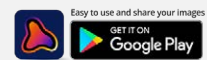
## Superior Image Clarity & Smooth Video

With 256x192 IR resolution/49,152 pixels and thermal sensitivity  $<0.04^{\circ}\text{C}$  sensor, it provides higher-definition images, and it is easier to spot subtle heat loss or gain in the electrical system not visible to the naked eye. 25 Hz image refresh provides a smooth image and video while panning across scenes or viewing moving items.



## Professional Viewer APP

Compatible with our free HIKMICRO Viewer APP for Android (Type-C) smartphones or tablets. It provides a user-friendly user interface and powerful temperature measurement and analysis functions, including Infrared/Fusion Image Mode, 15 Color Palettes, 9 measurement areas, and image share.



## User-Friendly Experience

Instantly attaches to your Android smartphone or tablet and is ready to go in seconds. The HIKMICRO Mini2 series is battery-free so you'll never need to charge it up or find a charger cable. It's powered by your phone, designed to run on very little power to maximize your mobile device run time, and ready whenever you are.



## Portable yet Durable

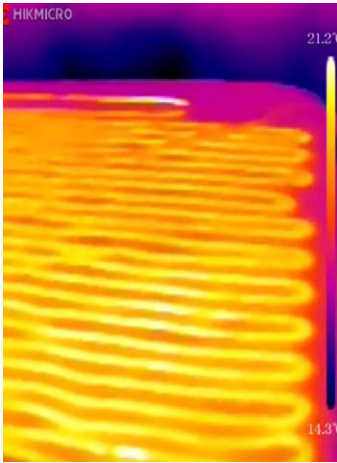
Designed for where you work, live, or relax. It'll fit in your pocket, tool bag, or anywhere convenient for quick and easy access. With IP40-rated aluminum alloy housings, pass strict drop tests up to 1 meter (3.3 feet), allowing you to work with confidence in most work environments.



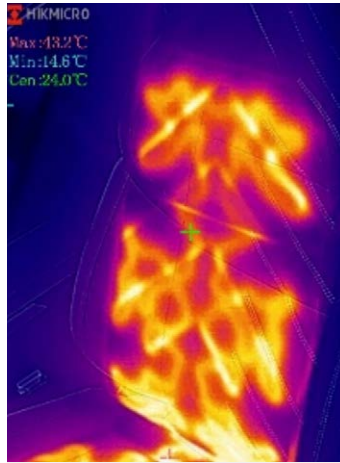
## Multiple Practical Accessories

A 40 cm (15.75 in) extending cord connects between your device and the camera allowing remote viewing, and inspection through narrow, confined openings, or difficult-to-reach places. Also included is an 18 mm extended connector to accommodate smartphones or tablets in a protective case. A protective case is provided for storing your camera and keeping it free of scratches.

# APPLICATIONS



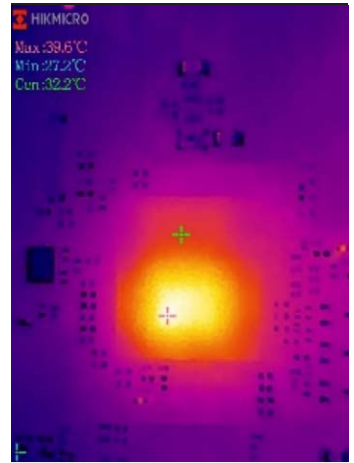
Home Inspection



Automotive Inspection

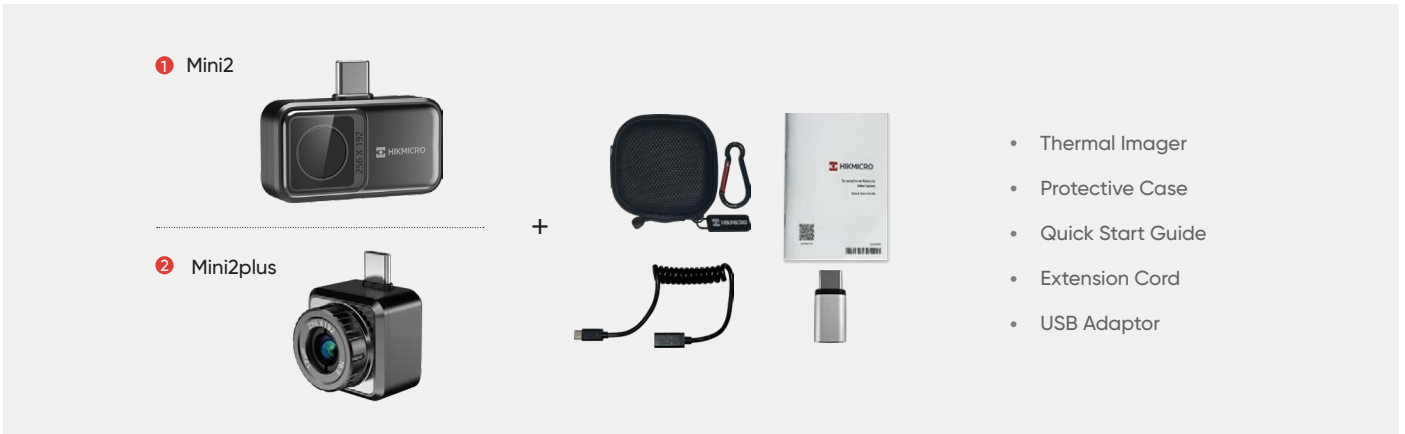


Electrical Inspection



PCB Board Detection

# WHAT'S IN THE BOX



Model No		Mini2	Mini2Plus
Infrared Image	IR Resolution	256 × 192 (49,152 pixels)	
	NETD	< 40 mK (@ 25 °C, F#=1.0)	
	Image Frequency	25 Hz	
	Field of View (FOV)	50° × 37.5°	25° × 18.8°
	Focus Mode	Focus Free	Manual Focus
Measurement and Analysis	Object Temperature Range	-20 °C to 350 °C (-4°F to 662°F)	
	Accuracy	Max (±2°C/3.6°F, ±2%), applicable 60 sec after start-up when the ambient temperature 15°C to 35°C (59°F to 95°F) and object temperature above 0°C (32°F)	
	Measurement Tools	Center Spot, Hot Spot, Cold Spot User-definable: 3 spots, 1 line, and 3 rectangles.	
General	Weight	Approx. 20 g (0.044 lb)	Approx. 24 g (0.053 lb)
	Dimension	42 × 22.5 × 11.2 mm (1.38 × 0.74 × 0.37 in)	26.6 × 26.6 × 25 mm (1.05 × 1.05 × 0.98 in)

# E SERIES

Compact thermal imaging camera for troubleshooting



## Long Battery Life

Work all day on a single charge.



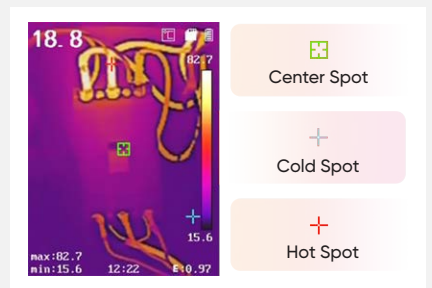
## Laser Pointer

Laser Pointer helps show the position of the center point on actual object.



## Efficient Temperature Measurement

Track the temperature of the Center Spot, Hot Spot, Cold spot automatically.



## Light Weight

350 g (12.4 oz) compact design, easy to carry.



## Rugged & Durable Design

IP54 rated for protection against water and dust. Featuring 2-meter (6.6ft) drop protection, suitable for industrial use.



## High Image Quality

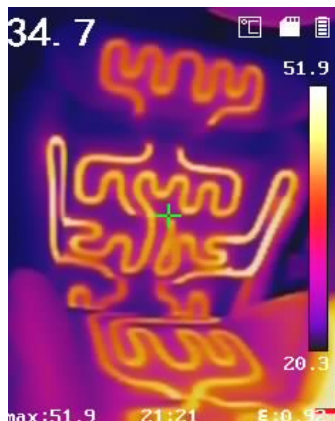
A highly sensitive VOx detector (NETD < 40 mK) provides a distinct thermal vision of the target.



## APPLICATIONS



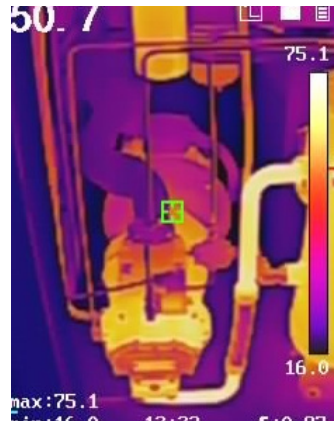
HVAC Inspection



Automotive Inspection

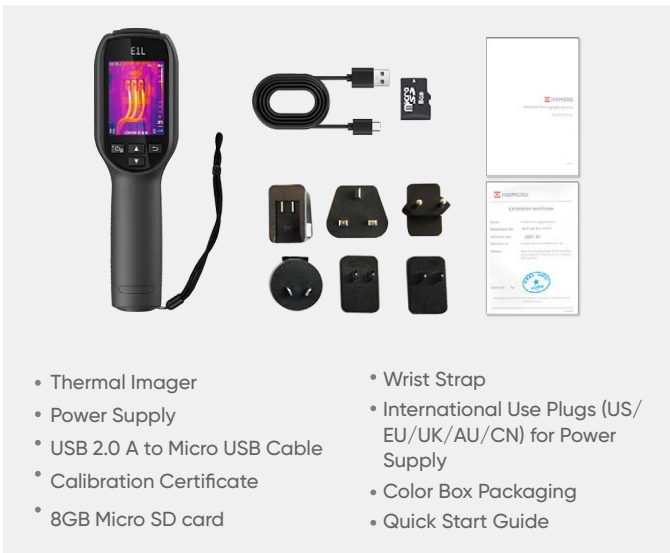


Electrical Inspection



Mechanical Inspection

## WHAT'S IN THE BOX



- Thermal Imager
- Power Supply
- USB 2.0 A to Micro USB Cable
- Calibration Certificate
- 8GB Micro SD card
- Wrist Strap
- International Use Plugs (US/EU/UK/AU/CN) for Power Supply
- Color Box Packaging
- Quick Start Guide

## OPTIONAL ACCESSORIES



– E/B Series POUCH –  
HM-B01-POUCH

Model No	E1L	
Infrared Image	IR Resolution	160 × 120 (19,200 pixels)
	NETD	< 40 mK (@ 25 °C, F#=1.0)
	Image Frequency	25 Hz
	Field of View (FOV)	37.2° × 50°
	Minimum Focus Distance	0.15 m (0.49 ft)
	Focus Mode	Focus Free
Image Display	Display	240 × 320 Resolution, 2.4" LCD Screen
	Measurement and Analysis	Object Temperature Range
Data Storage and Communication	Accuracy	-20 °C to 550 °C (-4 °F to 1022 °F) Max (±2°C/3.6°F, ±2%), for the ambient temp. 15°C to 35 °C (59 °F to 95 °F) and object temp. above 0 °C (32°F)
	Storage Media	Removable 8 GB Micro SD Card
	File Format	Radiometric JPEG
General	Storage Capacity	Up to 120,000 images
	Durability	2m (6.56 ft) drop test, IP54
	Laser Pointer	Yes
	Battery Operating Time	Approx. 8 hours

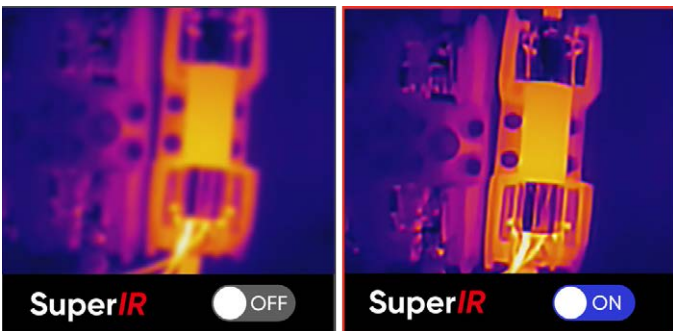
# Eco SERIES

IR Performance, Surprisingly Affordable, and Absolutely Brilliant



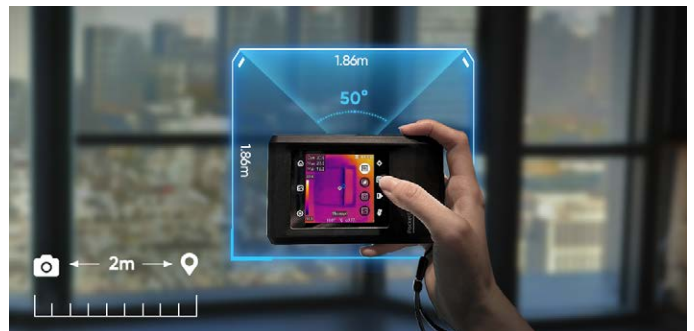
## Enhanced Thermal Clarity with SuperIR

Powered by HIKMICRO SuperIR image enhancement technology, it upscales thermal image from  $96 \times 96$  (9,216 pixels) to  $240 \times 240$  (57,600 pixels) resolution when **viewing live with 25 Hz** fast image frequency and capturing.



## 50° Wide Angle Lens

Scan large areas quickly with the **50° wide angle lens** to find issues like air infiltration, water leaks, and insulation issues.



## Rugged and Durable

Features **IP54**-rated form factor, passes strict drop tests up to 2 meters (6.56 feet) and comes with a three-year warranty.



## High Image Quality with Smooth Video

High Sensitivity IR sensor (NETD <math><0.05^\circ\text{C}</math> / NETD <math><50\text{mK}</math>) provides you with high image quality, easier-to-spot subtle heat loss or gain, and delivers high image quality. **25 Hz** fast image frequency delivers smooth video while panning across scenes or viewing moving targets.



## Multiple Image Modes

Eco-V and PocketE featured both an IR camera and a visible camera, allowing you to switch multiple image modes (Thermal, Visual, PIP, Fusion, or Blending) and save visual and thermal images simultaneously in one click. Provide you with efficient workflow and a fast inspection report.

### Eco

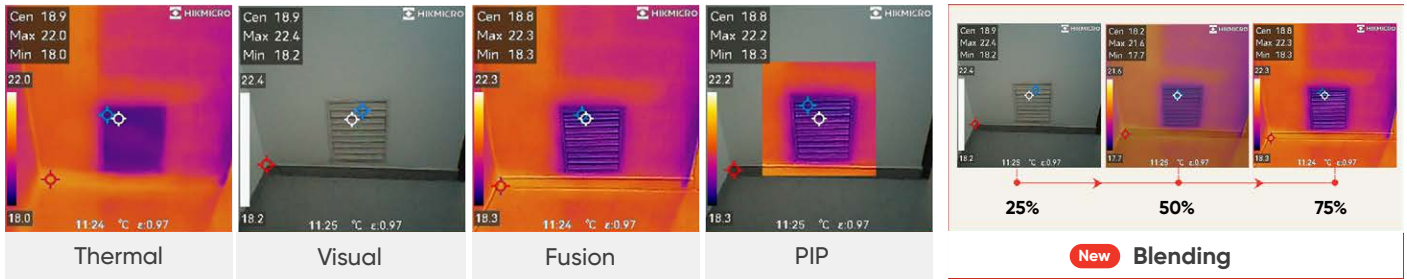
- Thermal Only

### Eco-V

- Thermal & visible dual-camera
- Thermal/Visual/Fusion

### PocketE

- Thermal & visible dual-camera
- Thermal/Visual/Fusion/PIP/Blending



## KEY FEATURES (Eco & Eco-V only)

### Full-screen Precise and Wide Temperature Measurement

Supports capture of full-screen radiometric images and automatically tracks max/min/center spots to pinpoint temperature anomalies at a glance. Accurately measures temperatures from **-20°C (-4°F) to 550°C (1022°F)**, with a temperature accuracy up to  $\pm 2^{\circ}\text{C}$  ( $\pm 3.6^{\circ}\text{F}$ ) or  $\pm 2\%$  of reading.



• Automatic Spot tracker

### 8 Hrs. Continuous Runtime

**Built-in 3350mAh Li-Ion** rechargeable battery and thoughtful auto power-off settings (**10/20/30/40/50/60 minutes**) allow the camera up to 8 hours of continuous operation.



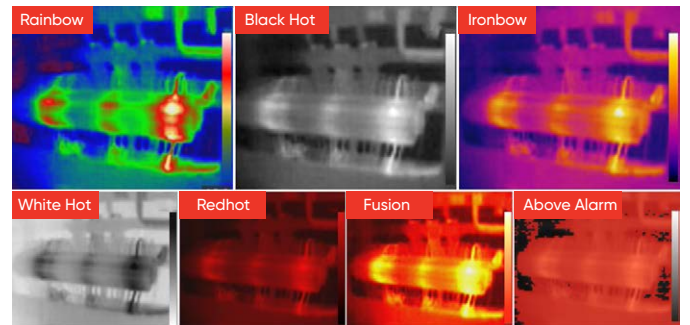
### Locate with Laser Pointer (Eco-V only)

Helps show the position of the center point on actual object.



### 7 Color Palettes

Offers White Hot, Black Hot, Rainbow, Ironbow, Redhot, Fusion & Above Alarm 7 color palettes so you can choose the ideal color scale for your job.



## KEY FEATURES (PocketE only)

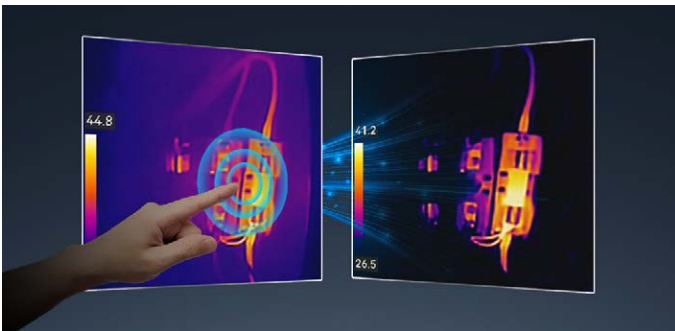
### Portable Pocket-sized with Touch Screen

Easy to carry and hold. Perfectly fit in pockets and any toolboxes. View the details of your images on the large, intuitive **LCD 3.5"** touch screen.



### 1-Tap Level & Span

Just tap an area of interest on the screen and it instantly increases image contrast and highlights potential problems.



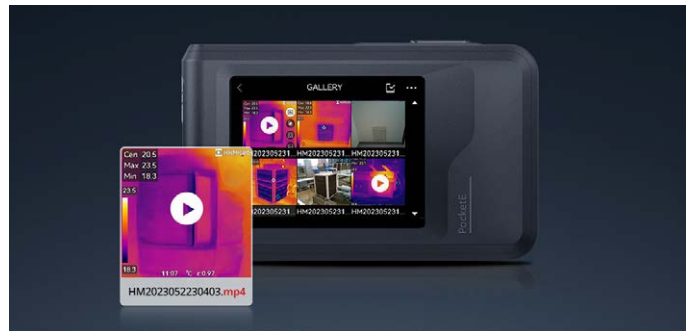
### Wireless Connectivity

Screen stream and download on-device images with **Wi-Fi** to your smartphone or tablet with HIKMICRO Viewer.

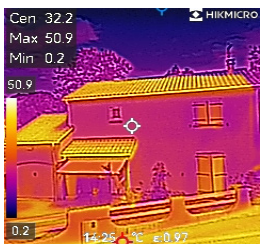


### On-camera Recording

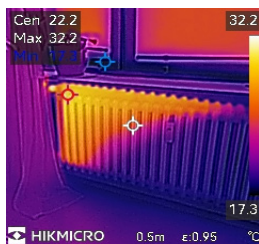
The built-in **4GB** eMMC flash storage can store approx 30,000 standard thermal/visual images or 20 hours of **MP4 video**. And, it allows onboard recording and playback.



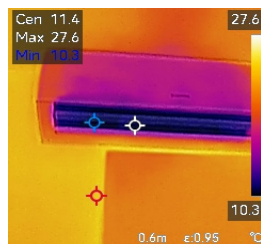
## DISCOVER APPLICATIONS



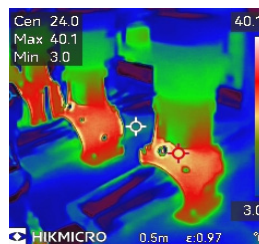
Building



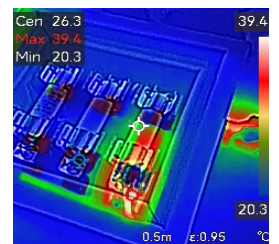
Heating



Air Conditioning

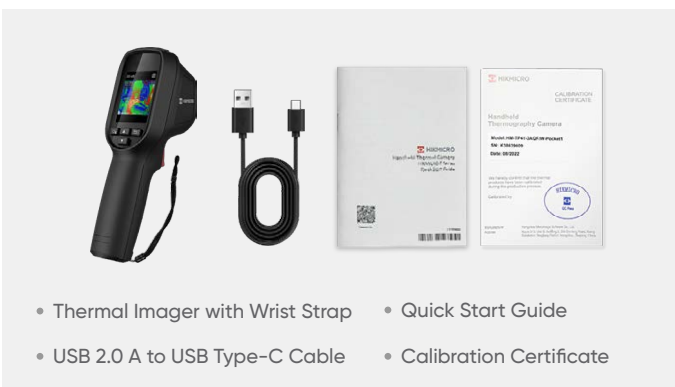


Maintenance



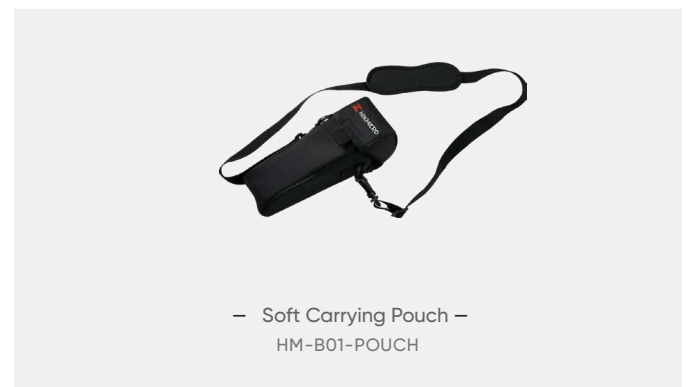
Electrical

## WHAT'S IN THE BOX (Eco & Eco-V)



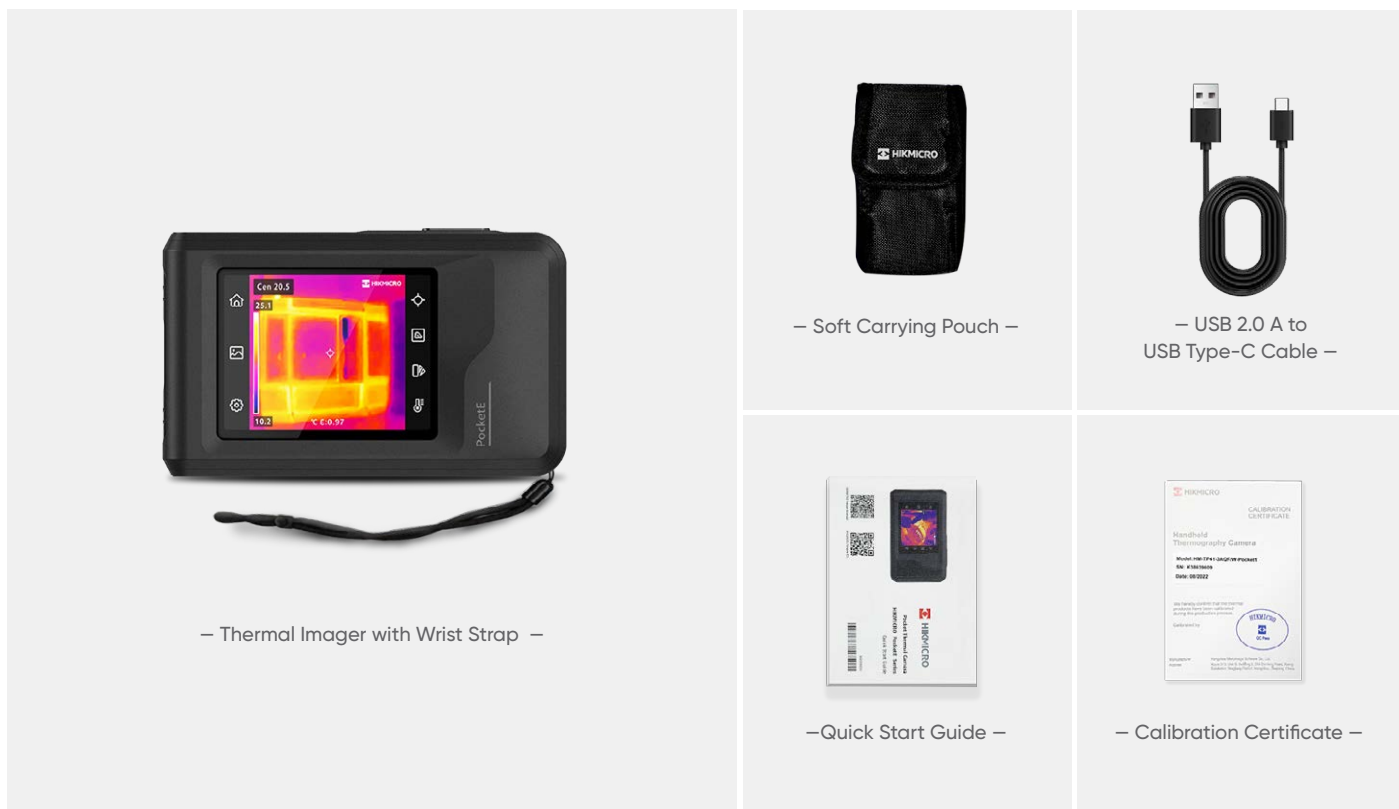
- Thermal Imager with Wrist Strap
- USB 2.0 A to USB Type-C Cable
- Quick Start Guide
- Calibration Certificate

## OPTIONAL ACCESSORIES (Eco & Eco-V)



- Soft Carrying Pouch – HM-B01-POUCH

## WHAT'S IN THE BOX (PocketE)



Camera Highlights		Eco	Eco-V	PocketE
Infrared Image	IR Resolution	96 × 96 (9,216 pixels)		
	SuperIR	240 × 240 (57,600 pixels), on Live View and Captured Images		
	NETD	< 50 mK (@ 25 °C, F#=1.0)		
	Image Frequency	25 Hz		
	Field of View (FOV)	50° × 50°		
	Focus Mode	Focus Free		
Image Display	Visual Camera	N/A	640 × 480 (307,200 pixels)	640 × 480 (307,200 pixels)
	Image Modes	Thermal	Thermal/Fusion/Visual	Thermal/Visual/Fusion/PIP/Blending
	Display	240 × 320 Resolution, 2.4" LCD Screen		320 × 240 Resolution, 3.5" LCD Touch Screen
Measurement and Analysis	Object Temperature Range	-20°C to 550°C (-4°F to 1022°F)		-20°C to 350°C (-4°F to 662°F)
	Accuracy	Max (±2°C/3.6°F, ±2%) at ambient temperature 25°C (77°F) and object temperature above 0°C (32°F)		
Data Storage and Communication	Storage Media	Built-in 4 GB flash memory		
	File Format	Radiometric JPEG		Radiometric JPEG, MP4
	Storage Capacity	Approx. 30,000 Images		Approx. 30,000 Images, 20 hours videos
General	Wi-Fi	N/A		802.11 b/g/n ( 2.4 GHz )
	Battery Operating Time	Approx. 8 hours		Approx. 4 hours
	Led Flashlight	N/A		Yes
	Laser Pointer	Yes		N/A
	Durability	IP54, 2 m (6.56 ft) drop protection		
	Weight	Approx. 290 g (0.64 lb)		Approx. 218 g (0.481 lb)

# B SERIES

Compact and easy-to-use thermal camera for daily operation



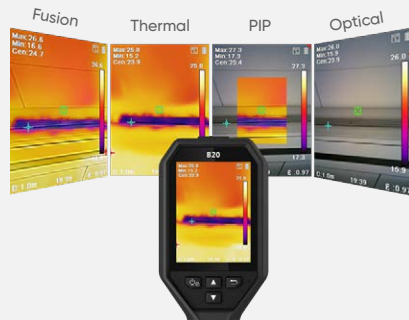
## Enhanced Thermal Clarity with SuperIR

Powered by HIKMICRO SuperIR image enhancement technology, it upscales the resolution of captured thermal images to 320 x 240 (76,800 Pixels).



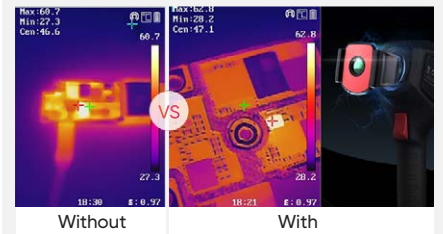
## Multiple Image Modes

Fusion, Thermal, PIP and Visual modes to suit your preferred view. (B11, B20 only)



## Innovative Macro Mode

Using a clip-on macro lens, the B series cameras can see details as small as 500 microns and allow you to take accurate temperature readings on small objects, such as components on printed circuit boards or assemblies.



## 3.2" Color LCD

View the details of your images on the large, class-leading LCD screen.



## Efficient Temperature Measurement

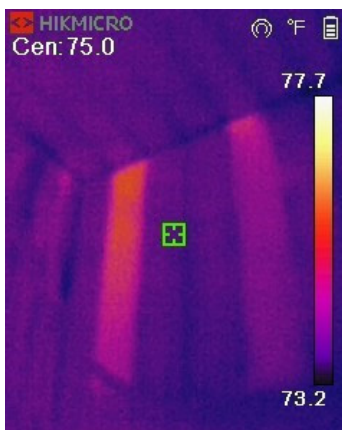
Track the temperature of Center, Hot, Cold spot and 3 Custom spots automatically.



## Wi-Fi Connectivity

Connect to mobile devices via built-in Wi-Fi and the HIKMICRO Viewer App to quickly share your images.

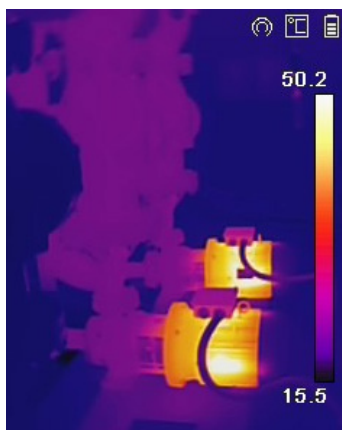
## APPLICATIONS



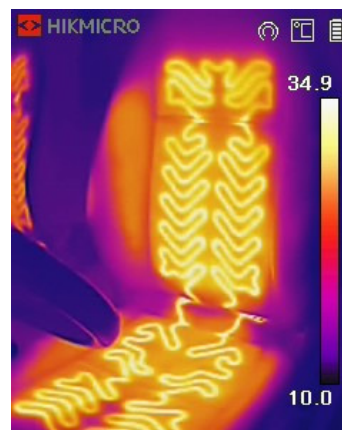
Building Envelope



Electrical Cabinet



Mechanical Inspection



Automotive Inspection

## WHAT'S IN THE BOX



- Thermal Imager
- Wrist Strap
- International Charger x 5 (US, UK, EU, AU, CN),
- USB Cable
- Power Adapter
- Quick Start Guide
- Calibration Certificate

## OPTIONAL ACCESSORIES



– B Series Macro Lens –  
HM-B201-MACRO



– E/B Series POUCH –  
HM-B01-POUCH

Camera Highlights		B11	B21L	B20
Infrared Image	IR Resolution	192 × 144 (27,648 pixels)	256 × 192 (49,152 pixels)	
	SuperIR	Yes, on Captured Thermal Images		
	NETD	<0.04°C / NETD< 40mK		
	Image Frequency	25 Hz		
	Field of View (FOV)	27.8° × 37.2°	37.2° × 50.0°	37.2° × 50.0°
	Focus Mode	Focus Free		
Image Display	Visual Camera	1600 × 1200 (2 MP)	N/A	1600 × 1200 (2 MP)
	Image Modes	Thermal/Visual/PIP/Fusion	Thermal	Thermal/Visual/PIP/Fusion
	Display	240 × 320 Resolution, 3.2"LCD Screen		
Measurement and Analysis	Object Temperature Range	-20 °C to 550 °C (-4°F to 1022°F)		
	Accuracy	Max (±2°C/3.6°F, ±2%), for the ambient temp. 15°C to 35 °C (59 °F to 95 °F) and object temp. above 0 °C (32°F)		
Data Storage and Communication	Storage Media	Built-in 16 GB flash memory		
	File Format	Radiometric JPEG		
	Storage Capacity	Up to 90,000 images		
General	Durability	2m (6.56 ft) drop test, IP54		
	Wi-Fi	802.11 b/g/n (2.4GHz)		
	Led Flashlight	Yes	N/A	Yes
	Laser Pointer	N/A	Yes	N/A
	Battery Operating Time	Approx. 6 hours		

# POCKET SERIES

Portable pocket-sized design and fits in any pocket



## Easy User Interface

Brilliant 3.5" 640x480 Touchscreen simplifies operations, including advanced 1-Tap Level and Span mode, instantly improving image contrast and highlights potential problems.



## Fast Communication

Connect (Wi-Fi or Hotspot) to HIKMICRO Viewer App for transmitting pictures from camera to mobile phone. Analyze, share images, and generate reports in real-time.



## Portable Pocket-sized Design

Easy to carry and hold. It fits perfectly in your pocket and tool bag.



## On-camera Recording

Built-in 16 GB internal memory provides onboard recording and playback.



## Continuous Digital Zoom

1.0x to 4.0x continuous digital zoom provides more image details.

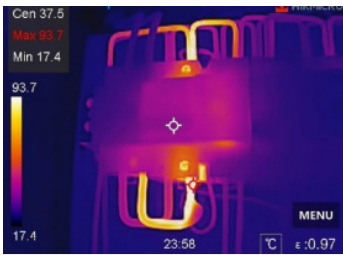


## Intuitive Interface

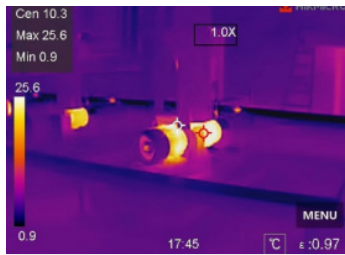
Swipe down or touch the icons to access all camera features and settings



## APPLICATIONS



Electrical Cabinet



Check Machine Temperature



Building Envelope



HVAC Inspection

## WHAT'S IN THE BOX



- Thermal Imager
- Wrist Strap
- Power Supply
- USB 2.0 A to USB Type-C Cable
- Soft Carrying Pouch
- Color Box Packaging
- Calibration Certificate
- Quick Start Guide

## OPTIONAL ACCESSORIES



Model No		Pocket2
Infrared Image	IR Resolution	256 × 192 (49,152 pixels)
	NETD	< 40 mK (@ 25 °C, F#=1.0)
	Image Frequency	25 Hz
	Field of View (FOV)	50° × 37.2°
	Focus Mode	0.3 m (0.98 ft)
Image Display	Visual Camera	3264 × 2448 (8 MP)
	Image Mode	Thermal/Visual/Fusion/PIP/Blending
	Display	640 × 480 Resolution, 3.5" LCD Touch Screen with auto-rotation
Measurement and Analysis	Object Temperature Range	-20°C to 400°C ( -4°F to 752°F )
	Accuracy	Max (±2°C/3.6°F, ±2%), for the ambient temp. 15°C to 35 °C (59 °F to 95 °F) and object temp. above 0 °C (32°F)
Data Storage and Communication	Storage Media	Built-in 16 GB flash memory
	File Format	Radiometric JPEG, MP4
	Storage Capacity	Up to 60,000 Images, 54 hours videos
General	Durability	2m (6.56 ft) drop test, IP54
	Wi-Fi	Yes
	Led Flashlight	Yes
	Battery Operating Time	Approx. 4 hours

# M SERIES

Advanced thermal imaging camera with full function analysis



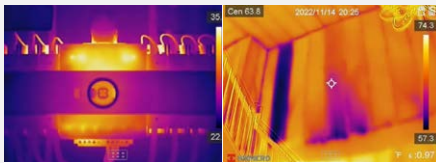
**SuperIR**™



VISIT OUR WEBSITE

## Multiple Product Options

M series products provide wide-angle and manual focus options. The manual focus with a larger focal length option (without "W") is ideal for electrical, HVAC, and mechanical inspection where focusing on specific components is critical. The "W" series features a fixed focus wide FOV making them ideal for scanning walls, floors, and large-scale items.

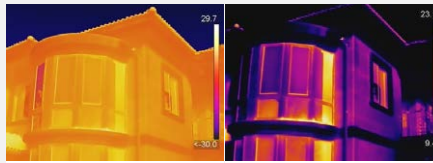


Without "W"

With "W"

## 1-Tap Level & Span

Quickly highlights the area of the image you are interested in by narrowing the span with one tap on the **3.5" LCD touchscreen**, instantly improving image contrast and highlighting potential problems.



Auto Level & Span

Manual / 1-Tap Level & Span

## Interchangeable Battery System

Includes **2 interchangeable Li-ion batteries** and a dual bay charger to provide you with **up to 12 hours** of operation. You can stay powered up for even the longest inspections.



2 interchangeable Li-ion batteries



## On-camera Analysis

Offers 17 measurement rules, 7 color alarm palettes and 4 image modes for powerful on-camera analysis.



## Camera Interface

Intuitive 3.5" LCD Touch Screen or interactive buttons to easily navigate to any function. Use either or both!



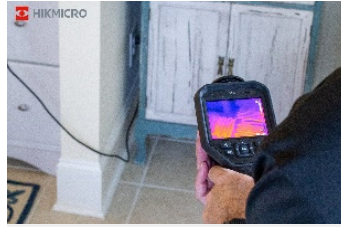
## Multiple Image Annotations

Support voice, text, and QR Code Scan annotations, helping to improve inspection efficiency and productivity.

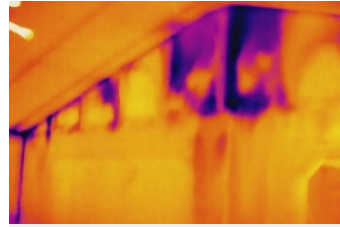
## APPLICATIONS



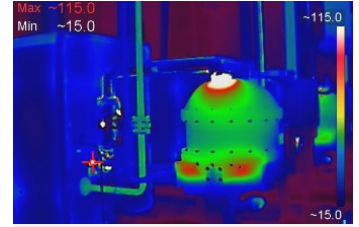
Check Electrical



Check Underfloor Heating



Check Building Insulation



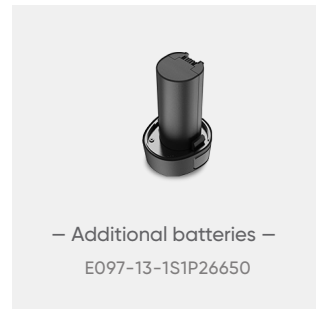
Check Mechanical Status

## WHAT'S IN THE BOX



- Thermal Imager with Wrist Strap
- Interchangeable and Rechargeable Li-ion Batteries (x2)
- Power Supply for Battery Charger
- Two-bay Battery Charger
- International Use Plugs (US/EU/UK/AU) for Power Supply (x4)
- USB 2.0 A to USB Type-C Cable
- Hard Carrying Case
- Calibration Certificate / Quick Start Guide
- 16GB Micro SD card(M10/M20/M20W) / 64GB Micro SD card(M30)

## OPTIONAL ACCESSORIES



– Additional batteries –  
E097-13-1S1P26650



– Pouch –  
HM-SP01-POUCH



– Replacement Charger –  
HM-5202ZC

Model No	M11	M11W	M20W	M20	M30	M60
IR Resolution	192 × 144 (27,648 pixels)	192 × 144 (27,648 pixels)	256 × 192 (49,152 pixels)	256 × 192 (49,152 pixels)	384 × 288 (110,592 pixels)	640 × 480 (307,200 pixels)
SuperIR	384 × 288 (110,592 pixels)	384 × 288 (110,592 pixels)	512 × 384 (196,608 pixels)	512 × 384 (196,608 pixels)	768 × 576 (442,368 pixels)	1280 × 960 (1,228,800 pixels)
NETD	< 40 mK (@ 25 °C, F#=1.0)				< 35 mK (@ 25 °C, F#=1.0)	
Focal Length	6.9mm	3.6mm	3.5mm	6.9mm	10mm	15mm
FOV	18.8° × 14.1°	37.2° × 27.8°	50° × 37.2°	25° × 18.8°	37.5° × 28.5°	41.9° × 33.3°
Focus	Manual Focus	Focus Free	Focus Free	Manual Focus	Manual Focus	Manual Focus
Visual Camera	3264 × 2448 (8 MP)					
Min. Focusing Distance	0.1 m (0.33 ft)	0.5 m (1.64 ft)	0.5 m (1.64 ft)	0.1 m (0.33 ft)	0.2 m (0.33 ft)	0.3 m (0.98 ft)
Object Temp. Range	-20 °C to 550 °C (-4 °F to 1022 °F)					-20 °C to 650 °C (-4 °F to 1202 °F)
Accuracy	Max. (± 2°C/3.6°F, ± 2%), for ambient temperature 15°C to 35°C (59°F to 95°F) and object temperature above 0°C (32°F)					
Wi-Fi	802.11 b/g/n (2.4 GHz and 5 GHz)					
Storage	Default Storage: Removable SD Card (16 GB) ; Max. Storage Capacity: 128 GB			Default Storage: Removable SD Card (64 GB) ; Max. Storage Capacity: 128 GB		
Battery Operating Time	Approx. 6 hours x 2	Approx. 6 hours x 2	Approx. 6 hours x 2	Approx. 6 hours x 2	Approx. 4 hours x 2	Approx. 4 hours x 2

# Gx1 SERIES

Ultra High Resolution. More Efficient Inspection



**SuperIR**™



## Ultra High Resolution

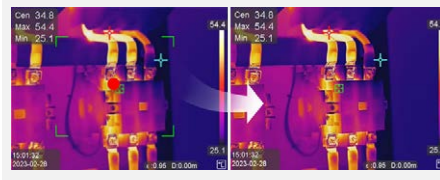
A highly sensitive VOx detector with up to 640 x 480 (307,200 pixels) IR resolution, provides a distinct thermal vision of the target.



## 5 Quick Focus Modes

Support for 5 focus modes and a fast focus speed of 2 seconds help save time by providing sharper images for more accurate temperature measurements.

-   
Continuous  
Autofocus
-   
Autofocus
-   
Laser Assisted  
Focus
-   
Manual  
Focus
-   
Touch AF



## Up to 2000°C Temperature Range

With a measurement range of up to 2000°C (3992°F), it can handle industrial furnace applications, refractory, and inspecting tools/fixtures in metal smelting at these extreme temperatures. (\*G41H/G61H only)



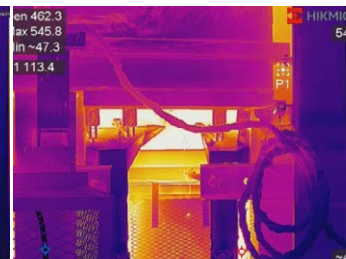
## APPLICATIONS



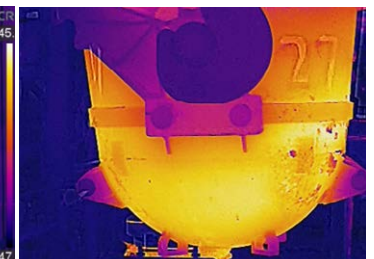
Electric Utilities



Facility Maintenance



Factory



Kilns

## ADD-ON LENSES



G31



**Wide Angle 0.5X**  
HM-G305-LENS1



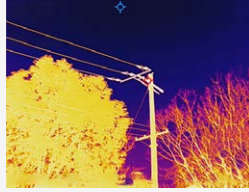
**Telephoto 2X**  
HM-G320-LENS1



**Telephoto 3.3X**  
HM-G330-LENS1



G41/H & G61/H



**Wide Angle 0.5X**  
HM-G605-LENS1



**Telephoto 2X**  
HM-G620-LENS1



**Telephoto 3.3X**  
HM-G630-LENS1

## WHAT'S IN THE BOX



- Handheld Thermography Camera
- 64GB Micro SD card
- Rechargeable Battery (x3)
- Charging Base
- Power Adapter
- International Use Plugs (US/EU/UK/AU) for Power Supply (x4)
- USB 2.0 A to USB Type-C Cable
- HDMI Cable
- Lens Cover
- Hand Strap
- Accessory Bag
- User Manual
- Calibration Certificate
- Quick Start Guide
- Packing List
- Carrying Case
- Aperture (G41H/G61H Only)

Model No		G31	G41	G41H	G61	G61H
Infrared Image	IR Resolution	384 x 288	480 x 360	480 x 360	640 x 480	640 x 480
	SuperIR	768 x 576 (442,368 pixels)	960 x 720 (691,200 pixels)	960 x 720 (691,200 pixels)	1280 x 960 (1,228,800 pixels)	1280 x 960 (1,228,800 pixels)
	NETD	< 35 mK (@ 25 °C, F#=1.0)				
	Image Frequency	50 Hz				
	Field of View (FOV)	25° x 19°	18.7° x 14°	18.7° x 14°	25° x 19°	25° x 19°
	Spatial Resolution (IFOV)	1.13 mrad	0.68 mrad	0.68 mrad	0.68 mrad	0.68 mrad
	Focus Mode	Laser Assisted AF/Continuous AF/AF/Manual Focus/Touch AF				
Image Display	Visual Camera	3264 x 2448 (8 MP)				
Measurement and Analysis	Object Temperature Range	-20 °C to 650 °C (-4 °F to 1202 °F)	-20 °C to 650 °C (-4 °F to 1202 °F)	-20 °C to 2000 °C (-4 °F to 3632 °F)	-20 °C to 650 °C (-4 °F to 1202 °F)	-20 °C to 2000 °C (-4 °F to 3632 °F)
	Accuracy	Max (±2°C/3.6°F, ±2%)				
General	Image and Video Formats	JPEG, MP4, Radiometric Video				
	Wi-Fi	802.11 b/g/n (2.4 GHz and 5 GHz)				
	HDMI Interface	Yes				
	GPS & Compass	Yes				
	Battery Operating Time	3 batteries, 4hrs/battery runtime				

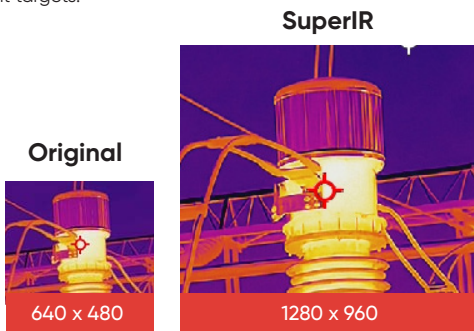
# SP SERIES

Ultra-high performance inspection and reporting thermography camera



## SuperIR

With HIKMICRO SuperIR, SP series cameras with 640 x 480 resolution detectors can capture ultra-sharp images with 4X pixels (1280 x 960), improving image quality, and allowing for more detailed analysis on smaller or distant targets.



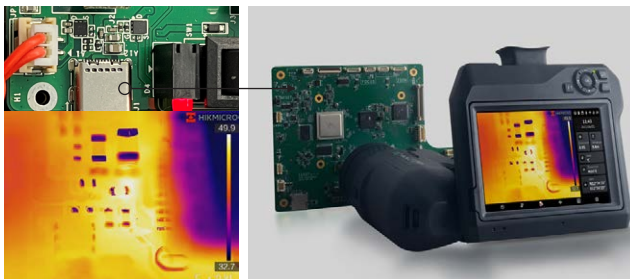
## Flexible Rotating Lens and Screen

The 90° rotating screen and the 180° rotating lens design help to easily view the area around, between, above, or below the target.



## Detect Tiny Faults

See details as small as 20µm with a macro lens, allowing you to take accurate temperature readings on small objects, such as components on printed circuit boards or assemblies.



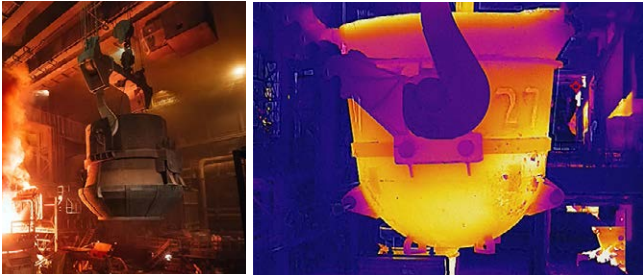
## One-second Fast Focusing

Supports 5 types of focus modes (Laser Assisted AF, Continuous AF, AF, Manual Focus, Touch AF) and one-second fast focusing speed helps to save time by giving sharper images, resulting in more accurate temperature measurements.



## SPxx H Series- Ultra High Temperature Range

With a measurement range of up to 2200°C (3992°F), the "H" series" can handle industrial furnace applications, refractory, and inspecting tools/fixtures in metal smelting at these extreme temperatures.



## Designed for Outdoors

Features IP54 rugged housing, 1024 x 768 OLED electronic viewfinder\*, and auto-brightness 5" color LCD touch display make it easy to conduct outdoor inspections under bright, challenging light and tough conditions. (\*SP60H, SP60 only)



## CAMERA FEATURES



### Multiple Image Annotations

Add 60-second voice clips or 200 text characters notes to your images for later review and reminders. The camera automatically adds GPS and compass directions for geolocation location and orientation.



### Multiple Image Modes

Thermal, Fusion, PIP and Optical modes to suit your preferred view.



### Simplify Inspection Process

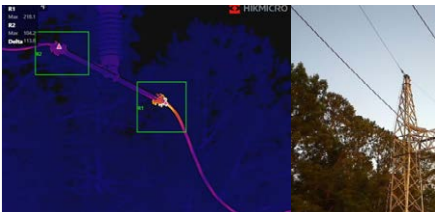
Using the included HIKMICRO Inspector PC Software, you can simplify the inspection process by pre-planning your inspection routes, downloading them directly to the camera, and guide you from location to location while collecting imagery at each station.



### Radiometric Images and Video Analysis

Supports recording of radiometric images and video to the onboard SD card, for post analysis on your PC and the no charge HIKMICRO analyzer software.

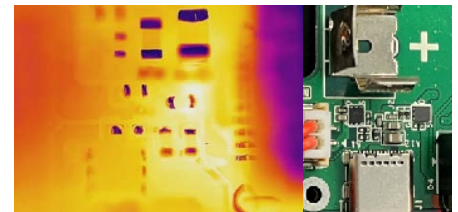
## APPLICATIONS



Utility Inspection



Industrial Inspection



Electronic Testing

## WHAT'S IN THE BOX








- Thermal Imager
- Hand Strap
- Neck Strap
- Rubber Viewfinder Cap
- Camera Lens Caps
- Interchange and Rechargeable Li-ion Batteries (x2)
- Power Supply for Battery Charger
- Two-bay Battery Charger
- International Use Plugs (US/EU/UK/AU) for Power Supply (x4)
- USB 2.0 A to USB Type-C Cable
- HDMI Cable
- USB Type-C Cable to USB Type-C Cable
- Hard Carrying Case
- Calibration Certificate
- Quick Start Guide
- 64GB SD card
- Lenses (according to the ordering model)








## OPTIONAL ACCESSORIES

<p><b>HM-SP630-LENS</b>  <b>3X</b> Ultra Telephoto Lens            77.4mm</p>  <p>SP40/SP40H: 6°(H) x 4.5°(V)            SP60/SP60H: 8°(H) x 6°(V)</p>	<p><b>HM-SP620-LENS</b>  <b>2X</b> Telephoto Lens            51.4 mm</p>  <p>SP40/SP40H: 9°(H) x 6.8°(V)            SP60/SP60H: 12°(H) x 9°(V)</p>	<p><b>HM-SP610-LENS</b>  <b>1X</b> Standard Telephoto Lens            25 mm</p>  <p>SP40/SP40H: 18.7°(H) x 14°(V)            SP60/SP60H: 24.8°(H) x 18.7°(V)</p>	<p><b>HM-SP605-LENS</b>  <b>0.5X</b> Wide Angle Lens            12.6 mm</p>  <p>SP40/SP40H: 37.3°(H) x 27.8°(V)            SP60/SP60H: 50°(H) x 37.3°(V)</p>	<p><b>HM-SP620-MACRO</b>  <b>20µm</b> Macro Lens            20µm minimum imaging target size            3cm focusing distance</p>  <p>SP40/SP40H: 4.95°(H) x 3.74°(V)            SP60/SP60H: 12.9°(H) x 10°(V)</p>
---	---	---	---	---

**Note:** Lenses are factory calibrated for temperature with the camera when purchased. If lenses are purchased separately at a later date, the camera and lens will need to be temperature calibrated (if desired) at a calibration center.

<p><b>HM-20322ZC</b></p> <ul style="list-style-type: none"> <li>• Replacement Power Supply for Battery Charger</li> <li>• Two-bay Battery Charger</li> <li>• International Use Plugs (US/EU/UK/AU) for Power Supply (x4)</li> </ul> 	<p><b>HM-7250DC</b></p> <ul style="list-style-type: none"> <li>• Additional Interchange and Rechargeable Li-ion Battery</li> </ul> 	<p><b>HM-SP01-POUCH</b></p> <ul style="list-style-type: none"> <li>• M/G/SP Series Pouch</li> </ul> 
--	---	--

Model No		SP40	SP40H	SP60	SP60H
Infrared Image	IR Resolution	480 × 360 (172,800 pixels)		640 × 480 (307,200 pixels)	
	SuperIR	960 × 720 (691,200 pixels)		1280 × 960 (1,228,800 pixels)	
	NETD	< 30 mK (@ 25 °C, F#=1.0)			
	Image Frequency	30 Hz			
	Field of View (FOV)	<b>SP40/SP40H:</b> L6: 6° × 4.5°; L9: 9° × 6.8°; L19: 18.7° × 14°; L37: 37.3° × 27.8° <b>SP60/SP60H:</b> L8: 8° × 6°; L12: 12° × 9°; L25: 24.8° × 18.7°; L50: 50° × 37.3°			
	Focus Mode	Laser Assisted AF/Continuous AF/AF/Manual Focus/Touch AF			
Image Display	Visual Camera	3264 × 2448 (8 MP)			
	Display	1280 × 720 Resolution, 5" LCD Touch Screen			
	Viewfinder	N/A		1024 × 768 pixels OLED	
Measurement and Analysis	Object Temperature Range	-20°C to 650°C (-4°F to 1202°F)	-40°C to 2200°C (-40°F to 3992°F)	-20°C to 650°C (-4°F to 1202°F)	-40°C to 2200°C (-40°F to 3992°F)
	Accuracy	<b>SP60/SP40:</b> Max. (± 2°C/3.6°F, ± 2%); <b>SP60H/SP40H:</b> ±1°C (±1.8°F): 0 to 100°C (32 to 212°F); ±1%: 100 to 150°C (212 to 302°F); ±2°C (±3.6°F): -40 to 0°C (-40 to 32°F); ±2%: 150 to 2200°C (302 to 3992°F)			
General	Wi-Fi	802.11 b/g/n (2.4 GHz and 5 GHz)			

# FIREFIGHTING THERMAL CAMERAS

The professional firefighting thermal cameras are products designed for firefighting and life rescue. It supports multiple display modes for different on-site purposes, for example, firefighting, hidden fire point searching, life rescue, building analysis, etc. These modes can help fire and rescue personnel detect and understand the temperature status of the scene and detect life signs more efficiently.



# FB21

Compact And Reliable Thermal Camera For Observing In Total Darkness And Smoke.



## High Image Quality

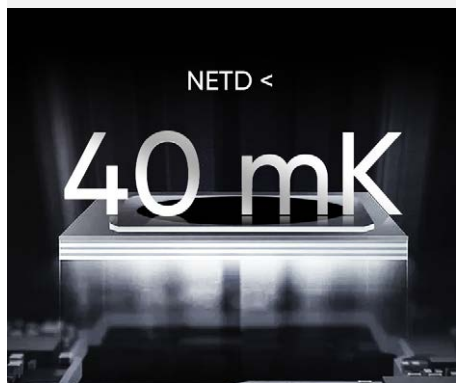
Features a highly sensitive (NETD < 40 mK) VOx detector and optimized image enhancement algorithms to provide clear thermal images.

## 3.2" Color LCD

View the details of your images on the large, class-leading LCD screen

## Rugged & Durable Design

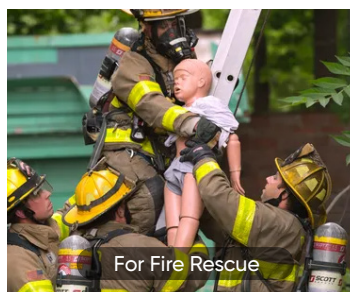
IP65 rated for protection against water and dust. Featuring 2-meter (6.56ft) drop protection, suitable for harsh environment.



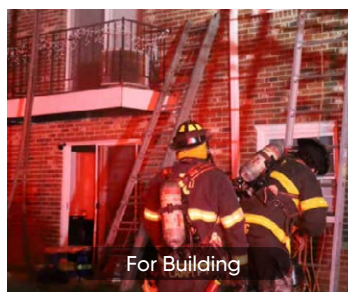
## For Observing In Total Darkness And Smoke



For Smoke Systems



For Fire Rescue



For Building

Working Temperature Range:  
Up to 10 minutes for ambient temperature **-10°C TO 90°C**  
**(14°F TO 194°F)**

Up to 2 minutes for ambient temperature **-10°C TO 115°C**  
**(14°F to 239°F)**

## 8 Color Palettes Give Different Image Display Options



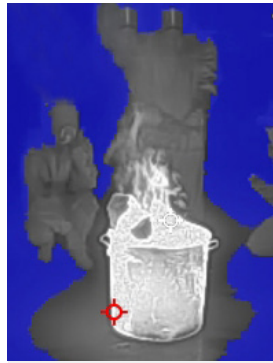
Fire Detection

For scenes with higher background temps where open flames are present, particularly in structural fires.



Rescue

For use with lower temperature situations, such as initial rescue efforts after traffic accidents, searches in wooded areas, etc.



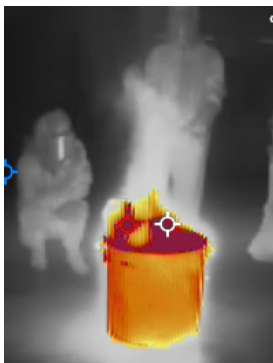
Cold Area



Building



Hot Area



Basic

For initial fire attack and rescue operations; colors represent temperature.



Black & White

Same representations of temperature as the Basic mode, but in grayscale.

### What's In The Box



- Thermal Camera with Wrist Strap
- Power Supply
- International Use Plugs (US/EU/UK/AU/CN) for Power Supply
- USB 2.0 A to USB Type-C Cable
- Calibration Certificate
- Quick Start Guide

Basic Parameters		FB21
Infrared Image	IR Resolution	256 × 192 (49,152 pixels)
	NETD	< 40 mK (@ 25 °C, F#=1.0)
	Image Frequency	25 Hz
	Field of View (FOV)	37.2° × 50.0°
	Min. Focusing Distance	0.3 m (0.98 ft)
	Focus Mode	Focus Free
Image Display	Visual Camera	1600 × 1200 (2 MP)
	Display	240 × 320 Resolution, 3.2" LCD Screen
	Color Palettes	Basic, Black Hot, White Hot, Fire Detection, Rescue, Hot Area, Cold Area, Building
Measurement and Analysis	Object Temperature Range	-20 °C to 550 °C (-4°F to 1022°F)
	Accuracy	Max. (± 2°C/3.6°F, ± 2%), for ambient temperature -20°C to 50°C (-4°F to 122°F) and object temperature above 0°C (32°F)
General	LED Light	Yes
	Battery Type	Rechargeable Li-ion battery
	Protection Level	IP65
	Drop Test Height	2 m (6.56 ft)
	Working Temperature Range	Up to 10 minutes for ambient temperature -10°C to 90°C (14°F to 194°F); up to 2 minutes for ambient temperature -10°C to 115°C (14°F to 239°F)
	Weight	Approx. 380 g (0.84 lb)

# FT31

High-performance Thermal Camera For Observing In Total Darkness And Smoke.



## High-Performance Thermal Camera

### High Image Quality

Features a highly sensitive (NETD < 35 mK) VOx detector, along with ODE(Object Details Enhancement) to provide clear thermal images.



### 60 Hz Fast Image Frequency

60 Hz fast image frequency delivers smooth video while panning across scenes or viewing moving targets.

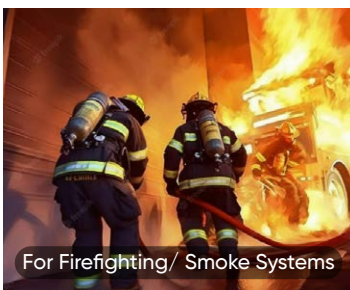


### Rugged & Durable Design

IP67 rated for protection against water and dust. Featuring 2-meter (6.56ft) drop protection, suitable for harsh environment.



## For Observing In Total Darkness And Smoke



Working Temperature Range:

**-20°C to 50°C (-4°F to 122°F);**  
**80°C (176°F), 40min;**  
**150°C (302°F), 15min;**  
**260°C (500°F), 7min.**

## 8 Color Palettes Give Different Image Display Options



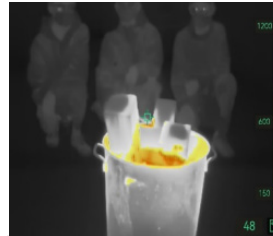
Fire Detection

For scenes with higher background temps where open flames are present, particularly in structural fires.



Rescue

For use with lower temperature situations, such as initial rescue efforts after traffic accidents, searches in wooded areas, etc.



Basic

For initial fire attack and rescue operations; colors represent temperature.



Black & White

Same representations of temperature as the Basic mode, but in grayscale.



Hot Area

Used for finding hotspots. The hottest 20% of the scene is colored red.



Cold Area



Building

### What's In The Box



- Thermal Imager
- Neck Strap
- Lanyard
- Retractable Lanyard
- Interchangeable and Rechargeable Li-ion Batteries
- Power Supply for Battery Charger
- Two-bay Battery Charger
- International Use Plugs (US/EU/UK/AU) for Power Supply
- USB 2.0 A to USB Type-C Cable
- Hard Carrying Case
- Calibration Certificate
- Quick Start Guide

Basic Parameters		FT31
Infrared Image	IR Resolution	384 x 288 (110,592 pixels)
	NETD	< 35 mK (@ 25°C, F#=1.0)
	Image Frequency	60 Hz
	Field of View (FOV)	54.1°×40.2°
	Min. Focusing Distance	1 m (3.28 ft)
	Focus Mode	Focus Free
Image Display	Display	800 × 480 Resolution, 4.3" LCD Screen
	Color Palettes	Basic, Black Hot, White Hot, Fire Detection, Rescue, Hot Area, Cold Area, Building
Measurement and Analysis	Object Temperature Range	-20°C to 1200°C (-4°F to 2192°F)
	Accuracy	Max. (± 2°C/3.6°F, ± 2%), for ambient temperature 15°C to 35°C (59°F to 95°F) and object temperature above 0°C (32°F)
General	Battery Type	Interchangeable and rechargeable Li-ion battery
	Protection Level	IP67
	Drop Test Height	2 m (6.56 ft)
	Working Temperature Range	-20°C to 50°C (-4°F to 122°F) 80°C(176°F) , 40min 150°C(302°F), 15min 260°C(500°F), 7min
	Weight	Approx. 1022g (2.25 lb)

# INTRINSICALLY SAFE THERMAL CAMERA

Potentially explosive environments, such as oil and gas plants or chemical plants, require preventing potential ignition from entering the atmosphere. Electronic equipment can be a source of ignition, which is why we must use explosion-proof products in hazardous areas. HIKMICRO is a certified (comply with ATEX and IECEx ) manufacturer of explosion-proof thermal cameras, which enables users to work with confidence and safety with our thermal cameras.





# BX20 ATEX & IECEx Certified

Compact Intrinsically Safe Thermal Camera for Hazardous Areas



## Certified Product and Manufacturer

Not only the HIKMICRO BX20 intrinsically safe thermal camera has obtained ATEX and IECEx certification. In addition, HIKMICRO is an audited manufacturer of hazardous location equipment and gets ATEX Quality Assurance Notification (QAN) and IECEx Quality Assurance Report (QAR).



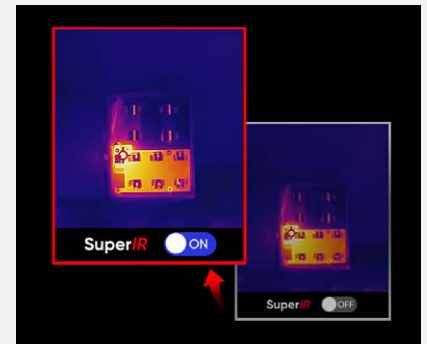
## High Image Quality

Features a high Resolution (256 × 192, 49,152 pixels) and highly sensitive (NETD < 40 mK) VOx IR detector, along with HIKMICRO SuperIR image enhancement algorithms to provide super clear thermal images.



## Enhanced Thermal Clarity with SuperIR

Powered by HIKMICRO SuperIR image enhancement technology, it upscales the resolution of captured thermal images to 320 × 240 (76,800 Pixels).



## 25 Hz Fast Image Frequency

25 Hz fast image frequency delivers smooth video while panning across scenes or viewing moving targets.



## Full-screen Precise and Wide Measurement

TSupports capture of full-screen radiometric images and automatically tracks max/min/center spots to pinpoint temperature anomalies at a glance. Accurately measures temperatures from -20°C to 550°C with a temperature accuracy up to +/-2°C or +/-2% of reading.

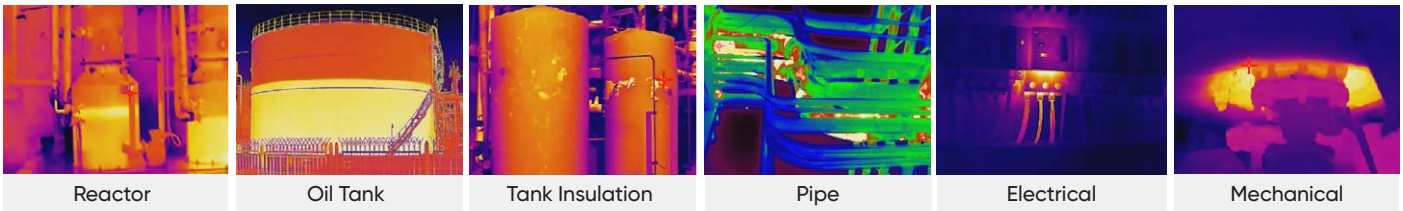


## Durable and Rechargeable Batteries

Built-in 3350mAh Li-Ion rechargeable battery and thoughtful auto power-off settings (10/20/30/40/50/60 minutes) allow the camera up to 6 hours of continuous operation.

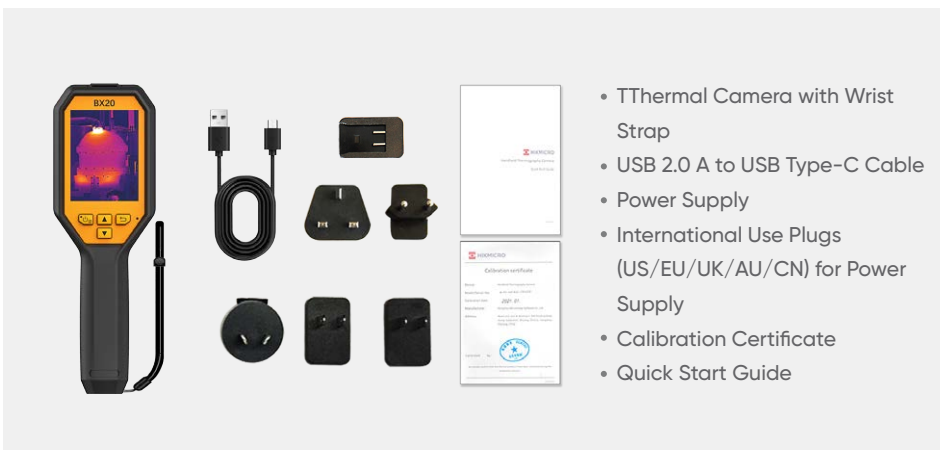
## APPLICATIONS

It is suitable for Zone 2 scenarios in petrochemical plants, refineries, substations, offshore platforms, production plants, pharmaceuticals, hazardous waste management and other industries.



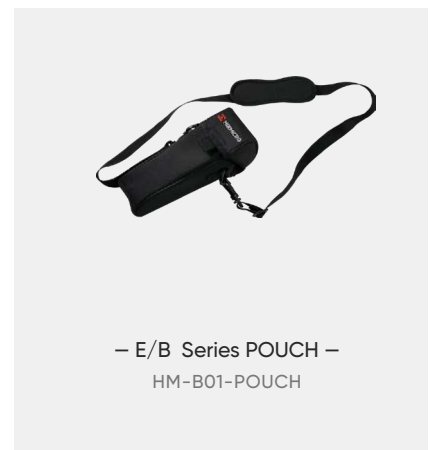
\*Note: The pictures taken by device are for reference only, the actual effect shall prevail.

## WHAT'S IN THE BOX



- Thermal Camera with Wrist Strap
- USB 2.0 A to USB Type-C Cable
- Power Supply
- International Use Plugs (US/EU/UK/AU/CN) for Power Supply
- Calibration Certificate
- Quick Start Guide

## OPTIONAL ACCESSORIES



– E/B Series POUCH –  
HM-B01-POUCH

Camera Highlights		BX20
Certificate Information	ATEX / IECEx Certificate Type	ATEX: II 3 G Ex ic IIC T6 Gc, II 3 D Ex ic IIIC T85°C Dc IECEx: Ex ic IIC T6 Gc, Ex ic IIIC T85°C Dc
Infrared Image	IR Resolution	256 × 192 (49,152 pixels)
	SuperIR	Yes, on Captured Thermal Images
	NETD	< 40 mK (@ 25 °C, F#=1.0)
	Image Frequency	25 Hz
	Field of View (FOV)	37.2° × 50.0°
	Focus Mode	Focus Free
Image Display	Visual Camera	1600 × 1200 (2 MP)
	Image Modes	Thermal/Visual/PIP/Fusion
	Display	240 × 320 Resolution, 3.2"LCD Screen
Measurement and Analysis	Object Temperature Range	-20 °C to 550 °C (-4°F to 1022°F)
	Accuracy	Max (±2°C/3.6°F, ±2%), for the ambient temp. 15°C to 35 °C (59 °F to 95 °F) and object temp. above 0 °C (32°F)
Data Storage and Communication	Storage Media	Built-in 16 GB flash memory
	File Format	Radiometric JPEG
	Storage Capacity	Approx. 90,000 Images
General	Battery Operating Time	Approx. 6 hours
	Led Flashlight	√
	Durability	IP54, 2 m (6.56 ft) drop protection
	Weight	Approx. 380 g (0.84 lb)

# ACOUSTIC SERIES

Sound is everywhere, but not all of it can be heard by the human ear. Acoustic products can help you to find all kinds of potential problems. It quickly finds problems by collecting sound and filtering noise through digital images, you can quickly find the source of the problems. Whether it's a leak indoors or in factories, substations, or the oil and gas industry. Acoustic products offer a more efficient, safe way to get your job done smoothly. Adopting Acoustic products can discover potential safety risks, minimize troubleshooting, and save extra equipment failures and downtime costs.



# AI56

For Finding Compressed Gas Leaks And Detecting Partial Discharge



## Low-noise MEMS Microphones and Adjustable Bandwidth

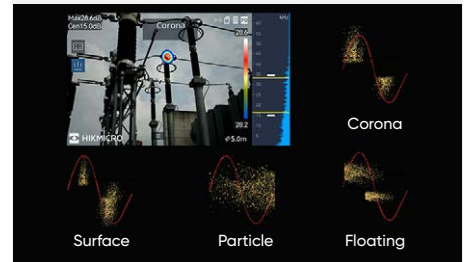
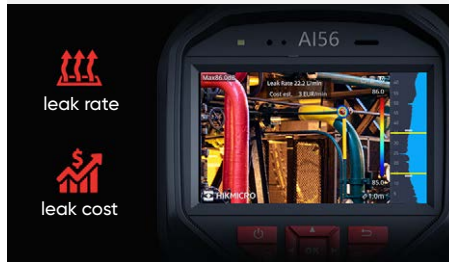
With 64 Low-noise MEMS microphones and an adjustable bandwidth range from 0 kHz to 96 kHz. The AI56 provides an easy and effective way to locate gas leak detection and partial discharge from high-voltage systems.

## Real-time Display of Leakage Data

The AI56 offers real-time estimated leak rate, leak cost, and leak level for gas leak detection. AI56 can filter noise to “visualize” sound with large 4.3” LCD touch screen even in noisy environments.

## 4 Types of Partial Discharges

AI56 is able to identify corona, floating, surface, and particle discharges, and exclude background noise in the scene. Knowing the type and severity of the discharge enables the facility to schedule maintenance to minimize failures and downtime.



## Analyzer Acoustic

Analyzer Acoustic software allows you to analyze and create reports based on field inspection images.



## Rugged and Portable

Convenient one-handed operation makes the AI56 easy to manage and find/document issues fast.



## Fully Document your Findings

Capture 5MP visual images with sound or partial discharge overlay. Add text or voice comments to complete your reporting quickly.

## APPLICATIONS



Gas Leak Detection

Partial Discharge Detection

## WHAT'S IN THE BOX



- Acoustic Imaging Camera (x1)
- Battery (x3)
- Charging Base (x1)
- Calibration Certificate (x1)
- Power Adapter (x1)
- Adapter (x4)
- Hand Strap (x1)
- USB Cable (x1)
- HDMI Cable (x1)
- SD Card (x1)
- MIC Protective Case (x1)
- Accessories Bag (x1)
- Quick Start Guide (x1)
- Carrying Case (x1)

Model No		AI56
Acoustic	Number of Microphones	64 low-noise MEMS microphones
	Bandwidth	0 kHz to 96 kHz, adjustable range MEMS sampling frequency: 192 kHz
	Distance	0.3m~100m (0.98 ft~328 ft)
	Sound Intensity Display	Peak Point
	Acoustic Image Frame Rate	25 fps
	Leak Rate	>0.008 l/min @ 6 bar from 0.5m (1.64 ft) >0.013 l/min @ 5 bar from 1 m (3.28 ft)
	Dynamic Range	Low Limit: <-15dB High Limit: >120dB
	Discharge Detection	Automatic detection 50 / 60 Hz
	Discharge Type	Corona Discharge, Particle Discharge, Floating Discharge, Surface Discharge
Image Display	Camera FOV	50.2°× 35.4°
	Display	800 × 480 Resolution, 4.3" LCD Touch Screen
	Digital Zoom	1.0x to 8.0x continuous
General	Annotations	Voice note: max. 60 seconds;Text note: max. 200 characters
	Battery Operating Time	3 batteries, 3.5hrs/battery runtime
	Working Temperature Range	-20 °C to 50 °C (-4 °F to 122 °F)

# AD21

## Professional Tools For Detecting Indoor Leaks



### Two Inspection Modes For Fast Leak Location

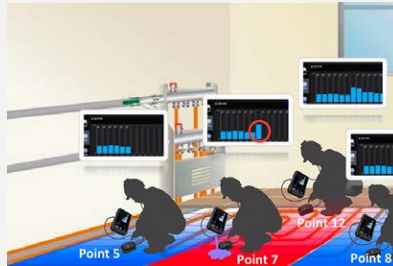
#### Quick Inspection Mode

Quickly locate the scope of the leakage point, through real-time digital and image changes for investigation.  
With three display modes: figure, bar chart and line chart, suitable for different users' habits.



#### Inspection Mode

Inspection mode can detect the floor and wall. Record the values of up to 12 areas. After finishing the inspection, AD21 will automatically determine the suspected leakage points, making the leakage detection work more accurate.



### Four Indoor Band Pass Filters

Through intelligent algorithms, AD21 is optimized for different sound bands in indoor leak detection scenarios, picking the right gear to quickly locate the location of the leak.

- Indoor Low-frequency **150 to 3000Hz**
- Indoor Mid-frequency **3000 to 6000Hz**
- Indoor High-frequency **4500 to 7500Hz**
- Indoor All-pass **150 to 7500Hz**



### Easy To Use, More Flexible Setting

7"LCD Touch Screen Display & Dual Wave Wheels



### High Quality Listening Experience

High-quality Noise-canceling Headset & Hearing Protection



### Durable And Rechargeable Batteries

Rugged & Durable Design with 11 Hrs. Continuous Runtime



## APPLICATIONS



Leak Under The Floor



Heating Pipes/  
Underfloor Heating  
Pipe Leaks



Water Supply  
Pipe Leakage/  
Water Pipe Leakage



Roofs And Walls,  
Water Seepage In  
The Ground



Fire Sprinkler  
System

## WHAT'S IN THE BOX



- Main Unit
- Handheld Sensor
- Pick-up Sensor
- Handle grip
- Headset
- Power Supply for Battery Charger
- International Use Plugs (US/EU/UK/AU) for Power Supply (x4)
- USB 2.0 A to USB Type-C Cable
- Pouch
- Quick Start Guide
- Calibration Certificate

Model No		AD21
Acoustic	Frequency Range	150~7500Hz
	Signal Noise Ratio	60dB
	Sensitivity	-29dB,70mv/g
	Sensor	hand held sensor, Pick-up sensor
	Band Pass Filters	Indoor low-frequency 150Hz to 3000Hz Indoor high-frequency 4500Hz to 7500Hz Indoor mid-frequency 3000Hz to 6000Hz Indoor all-pass 150Hz to 7500Hz
Image Display	Display	1024 × 600 Resolution, 7"LCD Touch Screen
	Screen Brightness	Manual/Auto
General	Storage Media	Built-in EMMC(4GB)
	Audio Storage Capacity	Approx. 20 hours
	Working Temperature Range	-10 °C to 50 °C (14 °F to 122 °F)
	Drop Test Height	1.2 m(3.93 ft.)
	Battery Type	Rechargeable Li-ion Battery
	Battery Operating Time	≥11h
	Battery Charging Time	3h to 90%,6h to full charge
Protection Level	Main Unit:IP40; Hand held sensor:IP54; Pick-up sensor:IP66;	

# MOBILE APPLICATIONS AND PC SOFTWARE

Gathering images through field inspections is the first step in delivering high-value, actionable findings to your customers. While at the site, HIKMICRO Viewer for mobile devices lets you immediately edit, call out, and send urgent findings to interested parties for quick decisions. When back at the office, HIKMICRO Analyzer for the PC is a fully featured analysis and reporting tool to manage radiometric images and video files. Create reports and add your company logo to one of the pre-made templates or edit and save your own templates. For large jobs with multiple inspection points requiring repeat inspections, we created HIMICRO Inspector that's compatible with our G and SP series cameras.

The HIKMICRO suite of software solutions provides you with the most professional portfolio of camera software designed to increase productivity and deliver results to your customers. Best of all, it's available at no extra charge or recurring fees.



# HIKMICRO VIEWER

WIRELESS ANALYSIS, REPORTING AND SHARING



HIKMICRO Viewer App is A powerful and intuitive APP designed for industrial thermal cameras. It allows thermal inspector to view and capture live streaming infrared video and still images from select HIKMICRO thermal imaging cameras using a mobile device. With the HIKMICRO Viewer, the thermal camera can be placed in an area and operated wirelessly from a distance - helping infrared detection work safely in hard-to-reach locations and harsh work environments. Streaming video and remote access also provide opportunities for decision-makers and others on the team to observe and collaborate during IR surveys. With a powerful reports function, you can efficiently generate reports for your clients in the field.

- ◆ Free license
- ◆ Scan and Connect Easily
- ◆ Download On-Device Images and Video to share
- ◆ Live View and Remote Control
- ◆ Advanced measurement and image analysis
- ◆ Quick reporting and sharing
- ◆ Firmware Upgrade
- ◆ After-sales contacts and online support services
- ◆ Turn screen rotation on and off



Live View and Remote Control



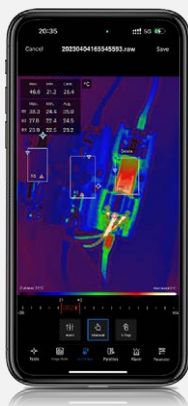
Scan and Connect Easily



Download On-Device Images and Sharing



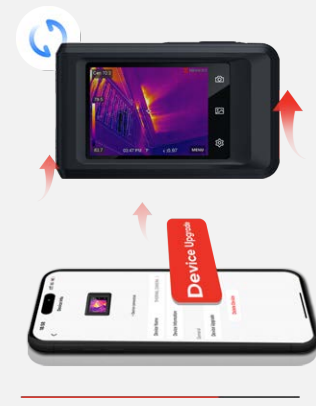
Radiometric Image Analysis



Generate Report in the Field



Firmware Upgrade



Learn more: [www.hikmicrotech.com/en/industrial-products/hikmicro-viewer-software](http://www.hikmicrotech.com/en/industrial-products/hikmicro-viewer-software)

# HIKMICRO ANALYZER

## EFFICIENT, POWERFUL THERMAL ANALYSIS AND REPORTING



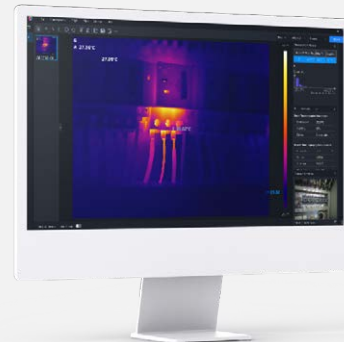
HIKMICRO Analyzer is a powerful and free licensed PC software designed to help users manage and analyze thousands of thermal images and videos and quickly create professional reports. Compatible with files from HIKMICRO handheld thermal cameras, providing the features you need to simplify your workflow and increase your productivity.

- ◆ Free license
- ◆ Import, edit and manage files
- ◆ View, edit and analysis radiometric images and videos
- ◆ Advanced measurement and image analysis
- ◆ Batch processing with all image and measurement controls
- ◆ Quick reporting with pre-defined or customized templates

### Capture Field Images

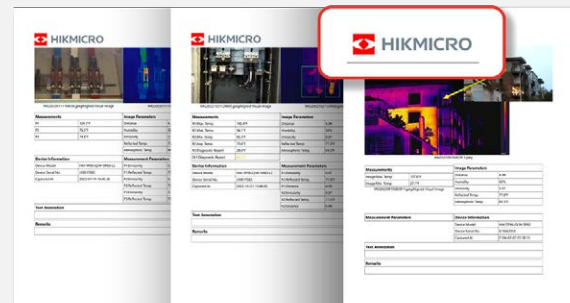


### Powerful Analysis Tools



### Generate Multi-page Reports

\* Customize report templates with your company logo



Download at: [www.hikmicrotech.com/en/industrial](http://www.hikmicrotech.com/en/industrial)

# HIKMICRO INSPECTOR

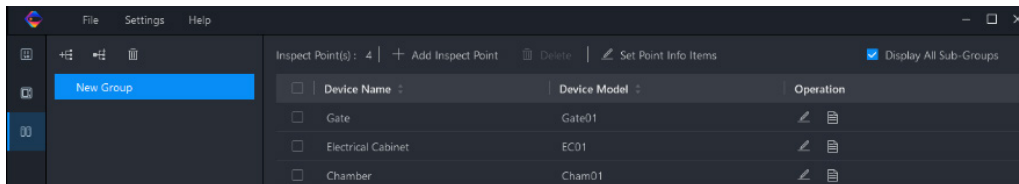


## SIMPLIFY AND ORGANIZE INSPECTION WORKFLOWS

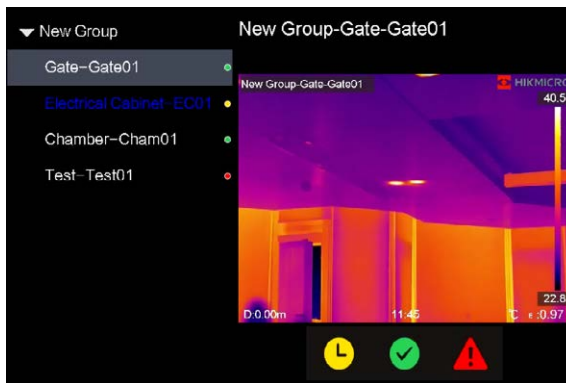
HIKMICRO Inspector is a powerful and free licensed PC software designed to help inspectors simplify the inspection process and complete it efficiently. It allows you to pre-plan your inspection routes, download and run them directly to a HIKMICRO inspection route-enabled camera\*, and guide you from location to location while collecting imagery at each station. Once you've completed an inspection, you can import images, data, and annotations into the HIKMICRO analyzer for professional analysis and report generation, cutting reporting time.

- ◆ Free license
- ◆ Pre-plan your inspection routes
- ◆ View, edit and manage inspection routes
- ◆ Link to HIKMICRO Analyzer for image analysis and report generation

### PRE-PLAN YOUR INSPECTION ROUTES



### THERMAL INSPECTION ON SITE



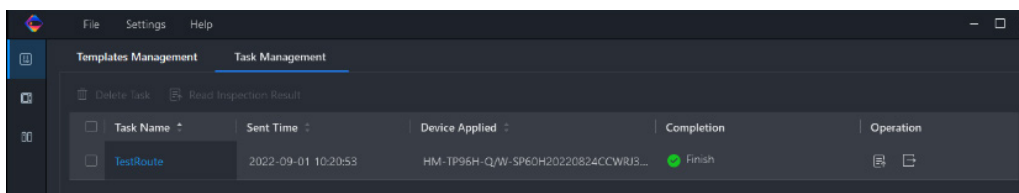
Exception

Normal

Pending



### ANALYSIS AND REPORTING



\*Only G series and SP series cameras with the latest firmware





[www.alldataee.com](http://www.alldataee.com)

## CONTACT US

Please feel free to get in touch with us.  
We'd love to hear your thoughts and answer any questions you may have!

## Headquarters

### Marketing Cooperation

Global-marketing@hikmicrotech.com

### Facebook

HIKMICRO Thermography

### Technical Support

support@hikmicrotech.com

### Instagram

hikmicro\_thermography

### General Enquiries

info@hikmicrotech.com

### YouTube

HIKMICRO Thermography

### LinkedIn

HIKMICRO

## Europe(ex. UK & Ireland)

### Germany

e-mail: techsupport.cee@hikmicrotech.com  
+49 61027009601

### France

Tel.: +33 180240079

### Italy

Tel.: +39 04381785901

### Norway

Tel.: +47 21492083

### Spain

Tel.: +34 919031282

### Netherlands

Tel.: +31 202255858

### Belgium

Tel.: +32 28086833

### Czech

Tel.: +420 234076118

### Denmark

Tel.: +45 78770168

### Romania

Tel.: +40 316303689

### Slovakia

Tel.: +421 233456332

### Finland

Tel.: +358 942457424

### Portugal

Tel.: +351 308801252

### Hungary

Tel.: +36 18508373

### Poland

Tel.: +48 221047595

### Sweden

Tel.: +46 840839036

## US & Canada

### Technical Support

e-mail:  
techsupport.na@hikmicrotech.com

### RMA

e-mail:  
rma.na@hikmicrotech.com

### Sales

e-mail:  
infoNAM@hikmicrotech.com

## UK & Ireland

### United Kingdom

Tel.: +44 2035140092

## AUS & NZ

### Australia

Tel.: +61 383759203

### New Zealand

Tel.: +64 42807421

## Japan

### Technical Support

e-mail: info\_jp.hm@hikmicrotech.com